



# MGI<sup>TM</sup>

## Ai SERIES

POWERED BY ✦ sureshot



# Ai NAVIGATOR GPS<sup>+</sup>

## Digital Manual

VERSION 1.0





# Ai NAVIGATOR GPS<sup>+</sup>

POWERED BY  sureshot

THANK YOU FOR  
PURCHASING MGI Ai  
NAVIGATOR GPS<sup>+</sup>.

**To get the most out of your Ai Navigator GPS<sup>+</sup> please follow these quick steps before use.**

**Register your Ai Navigator GPS<sup>+</sup> via the Top Handle**  
[Refer to registration doc.]

**Assembling the Ai Navigator GPS<sup>+</sup> [section 3.0]**

**Charging the battery [section 4.0]**

**For Customer Support, please contact MGI directly for immediate and professional advice go to [mgigolf.ie](http://mgigolf.ie)**

## **MGI IRELAND**

**Service Email:** [info@mgigolf.ie](mailto:info@mgigolf.ie)

**Phone:** +353 1 214-9301

## **MGI GLOBAL**

**Sales Email:** [globalsales@mgigolf.com](mailto:globalsales@mgigolf.com)

**Service Email:** [globalservice@mgigolf.com](mailto:globalservice@mgigolf.com)

**Live Chat:** visit [mgigolf.com](http://mgigolf.com)

NOTE: This user manual was correct at time of printing. The online version is the most up-to-date and must be referred to as the correct version. To download the most current user manual please visit [mgigolf.com](http://mgigolf.com)

Images shown throughout this manual may not be of the particular model you have purchased.



## Contents

<b>1.0 Registration</b>	05
<b>2.0 What Is Included</b>	05
<b>3.0 Assembling Your Ai Navigator GPS<sup>+</sup></b>	06
<b>3.1</b> Attaching the Rear Wheels	06
<b>3.2</b> Attaching the Front Wheels	07
<b>3.3</b> Rear Wheel Positions	07
<b>3.4</b> Fifth Foldable Rear	08
<b>3.5</b> Unfolding	09
<b>3.6</b> Folding	10
<b>3.7</b> Inverting Rear Wheels	11
<b>4.0 Battery Charging; Connection</b>	12
<b>4.1</b> Battery Charge	12
<b>4.2</b> Connecting the Battery onto the Ai Navigator GPS <sup>+</sup>	12
<b>4.3</b> Charging the Battery After Use	13
<b>5.0 Fitting a Golf Bag</b>	13
<b>6.0 Operating the Digital Top Box</b>	14
<b>6.1</b> Start / Stop the Navigator GPS <sup>+</sup>	14
<b>6.2</b> Turn the Ai Navigator GPS <sup>+</sup> Off	15
<b>6.3</b> Battery Level Indicator	15
<b>6.4</b> Unit Measurements	16
<b>6.5</b> Distance Modes	16
<b>6.6</b> Competition Mode	16
<b>7.0 Remote Control</b>	17
<b>7.1</b> Charging Your Remote Control	17
<b>7.2</b> Remote LED Colours and Status	17
<b>7.3</b> Forward Arrow	18
<b>7.4</b> Down Arrow	18
<b>7.5</b> Left and Right Arrow	18
<b>7.6</b> Park Brake	18
<b>7.7</b> Keypad Unlock and Lock	18
<b>7.8</b> Remote Range and Safety Stop	19
<b>7.9</b> Pairing a Remote	19
<b>8.0 Gyroscope Straight Tracker Navigation System</b>	19



<b>9.0 Warranty</b>	19
<b>9.1</b> Warranty Policy	19
<b>9.2</b> Warranty Exclusions	20
<b>9.3</b> Parts Installed During Warranty	21
<b>10.0 Preventative Maintenance Program</b>	21
<b>10.1</b> Cleaning Your Ai Navigator GPS <sup>+</sup>	22
<b>10.2</b> Rear Wheel Axles Maintenance	22
<b>10.3</b> Upper and Lower Bag Strap	22
<b>10.4</b> Correcting the Alignment	23
<b>10.5</b> MGI Service Schedule	23
<b>10.6</b> Service Record	24
<b>11.0 Service and Repair Centres</b>	25
<b>12.0 Purchasing Parts and Accessories</b>	25
<b>13.0 Frequently Asked Questions</b>	25
<b>14.0 MGI Contact Information</b>	26





## 1.0 REGISTRATION

It is important you register your MGI Ai Navigator GPS<sup>+</sup> immediately via the Top Handle. Registration allows you to:

- Record your Ai Navigator GPS<sup>+</sup> for warranty purposes
- Speeds up any servicing required on your Ai Navigator GPS<sup>+</sup>
- Assists us to contact you with any updates to your Ai Navigator GPS<sup>+</sup>

Alternatively you can also register your Ai Navigator GPS<sup>+</sup> via the MGI app or visit **mgigolf.com**

You will need to record your Ai Navigator GPS<sup>+</sup> serial number.

This is found on the Ai Navigator GPS<sup>+</sup> battery base or in the top box compartment.

Please keep this user manual on file for your own reference and a copy of your serial number;

### **My MGI Ai Navigator GPS<sup>+</sup> Serial Number is**

(example AAINV1225232995)

Purchase date:

/

You may be required to show proof of purchase so we recommend you keep your receipt with this manual.

## 2.0 WHAT'S INCLUDED

- ☐ MGI Ai Navigator GPS<sup>+</sup>
- ☐ 2 x Front Wheels
- ☐ 2 x All-terrain Rear Wheels
- ☐ High Performance Lithium Battery
- ☐ MGI Pouch
  - O Rings
  - Axle Lubrication Cloth
  - Battery Charger Manual
  - USB Lead
  - Remote Holder & Clip
  - Remote Control
- ☐ MGI Navigator Ai GPS<sup>+</sup> User Manual (online)
- ☐ Battery Charger and Manual

## 3.0 ASSEMBLING YOUR Ai NAVIGATOR GPS<sup>+</sup>

### 3.1 ATTACHING THE REAR WHEELS

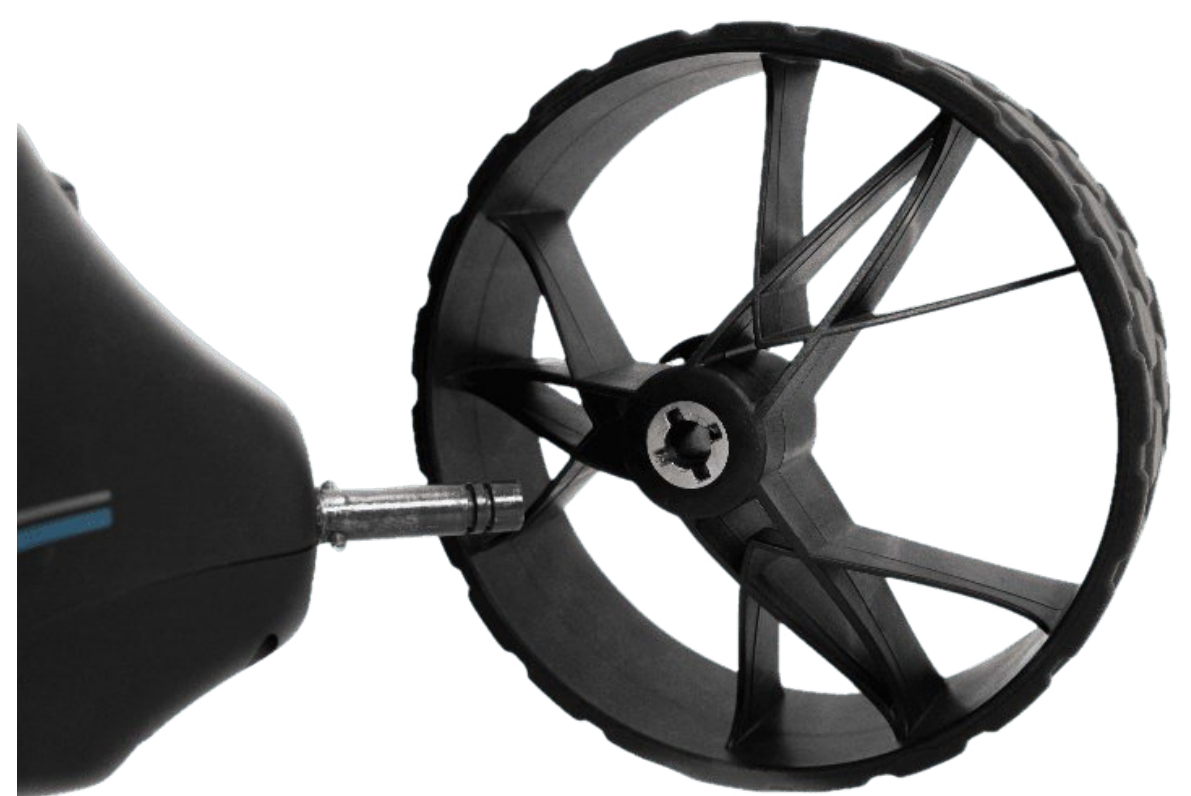
First, lubricate both axles using the axle lubricant cloth provided in the MGI Pouch. Lubrication of the axles should be performed regularly to keep your cart in optimal condition.



Press the black release button on the wheel hub. Place the wheel onto the axle. You will need to match up the inner female groove on the axle and the male of the wheel. See Section 3.3 for Rear Wheels Position.

When placed in position simply release the button. You will hear a “click” when the wheel is properly secured.

To check that the wheel is properly in position, pull on the wheel. If it is properly in position it will not slide off. Repeat for the other wheel.





## 3.2 ATTACHING THE FRONT WHEELS

The two front wheels need to be attached to your MGI Ai Navigator GPS<sup>+</sup>. There is no difference between each front wheel so either can be placed on the left or right side. Lubricate the axles with the Lubricant Cloth in the MGI Pouch. Simply line up the silver pin on the front wheel with the Ai Navigator GPS<sup>+</sup> and push into the frame until you hear a positive click. A black button on the side of the Ai Navigator GPS<sup>+</sup> frame just above the wheel connection will pop out to confirm the wheel is in the correct position. You can test the wheel is in position by pulling firmly on the wheel. It should not move out of position.



## 3.3 REAR WHEELS POSITIONS

The MGI Ai Navigator GPS<sup>+</sup> is designed to allow the rear wheels to be in two positions. The position is determined by where the wheel is locked on the axle in either of the two grooves (see picture).

The drive position is used during the normal operation of the Ai Navigator GPS<sup>+</sup>. The free wheel position is used to freely push the Ai Navigator GPS<sup>+</sup> should you choose not to use your battery, allowing for a manual push instead of battery powered.



**i. Drive position** – Lock the wheel onto the groove closest to the battery base. To do this, press the black release button on the wheel hub, push the wheel onto the axle as far as possible and pull back until the wheel clicks into place. To test for drive position, try rolling the wheel backward.

If you feel resistance then the wheel is now in drive position and ready to use. Repeat for the other wheel.

**ii. Free wheel** – Lock the wheel onto the groove closest to the end of the axle. To do this, press the black release button on the wheel hub, push the wheel onto the axle and release the button onto the groove.

To test for free wheel position try rolling the wheel backward. The wheel should spin freely with no resistance. Repeat for the other wheel. The two front wheels need to be attached to your MGI Ai Navigator GPS<sup>+</sup>.

### 3.4 FIFTH FOLDABLE REAR WHEEL

The MGI Ai Navigator GPS<sup>+</sup> comes standard with a fifth foldable rear wheel. The wheel **MUST** always be unfolded into position when the Ai Navigator GPS<sup>+</sup> is in use. This will reduce damage to the Ai Navigator GPS<sup>+</sup> and provide the ultimate stability across all terrains.

This fifth wheel should be cleaned regularly with a cloth to ensure it can be folded and retracted as required for storage.







# Ai NAVIGATOR GPS<sup>+</sup>

POWERED BY sureshot

## 3.5 UNFOLDING

Please see below the steps to unfold an Ai Navigator GPS<sup>+</sup>.



**STEP 1:** Depress the blue toggle to unlock the Top Bag Support.



**STEP 2:** Unfold the Top Bag Support until it is vertical, as per the image.





**STEP 3:** The handle is now free to pull upwards. The handle will naturally unfold as you continue to pull until the handle is completely open. The front wheels will unfold simultaneously as the handle is lifted into position.



**STEP 4:** Position handle to desired height then push the bag support forward until it clicks into place.



## 3.6 FOLDING

**Note:** Battery will disengage automatically during folding process.

**STEP 1:** Press and hold blue toggle to move top bag support backwards until it touches the handle





**STEP 2:** Push handle forward until top bag support touches chassis. The front wheels will fold under the cart as the handle is folded down.



**STEP 3:** Lower handlebar until touching chassis.



**STEP 4:** Press and hold blue toggle and rotate top bag support backward until it clicks into position.

## 3.7 INVERTING REAR WHEELS

The rear wheels can be inverted on the axle to reduce the size of the Ai Navigator GPS<sup>+</sup> when folded. To invert the rear wheels, press the black release button on the wheels hub and remove from the axle. Invert the rear wheels so that the wheels hub protrudes away from the axles.

Press the black release button on the wheel hub and release once the wheel is fitted onto the axle.







# AI NAVIGATOR GPS<sup>+</sup>

POWERED BY  sureshot

## 4.0 BATTERY CHARGING & CONNECTION

The MGI Ai Navigator GPS<sup>+</sup> can only be used with the:

- MGI 24v 380Wh Lithium battery.



### 4.1 BATTERY CHARGER

- Before using your MGI Ai Navigator GPS<sup>+</sup> for the first time you must fully charge the battery overnight.
- Plug the charger AC Lead into a power point. The green LED indicates the battery is fully charged whereas the red LED indicates it is not fully charged
- Lift the charging cover flap on the side of the battery then insert the charger lead ensuring the small semi-circle is facing upwards.
- The battery can be left on charge until next use. Please refer to the battery charger user manual for further information.

### 4.2 CONNECTING THE BATTERY ONTO THE NAVIGATOR GPS<sup>+</sup>

Position the battery on the Ai Navigator GPS<sup>+</sup> with the Red indicator switch placed closest to the Handle. Connect the battery by sliding the ON/OFF switch until the green indicator is displayed".

TIP: When this on/off button is used it will erase any on game information if you are within a Round. Alternatively use the SLEEP mode which maintains all current game information.





Your Ai Navigator GPS<sup>+</sup> has been equipped with a fail-safe battery connection, so the Ai Navigator GPS<sup>+</sup> will not move when you connect the battery. Your Ai Navigator GPS<sup>+</sup> will only start after the screen turns on. (Which may take up to 30 seconds). The Ai Navigator GPS<sup>+</sup> can then be activated by the speed control button or remote control.

## 4.3 CHARGING THE BATTERY AFTER USE

- The battery should be charged after each use even if it shows it has capacity.
- Disconnect the battery by sliding the battery connection switch until the red indicator is displayed. Please note this disconnection will also occur automatically when you fold the Ai Navigator GPS<sup>+</sup>.
- The battery can be left on or removed from the Ai Navigator GPS<sup>+</sup> for charging.
- The battery can be removed by moving and holding the front toggle switch to the rear of the Ai Navigator GPS<sup>+</sup> then lifting the battery using the handle grooves.
- Please refer to section 4.1 for battery charging information.

## 5.0 FITTING A GOLF BAG

Ensure that the top bag support straps are disconnected.

1. Position the golf bag on the Ai Navigator GPS<sup>+</sup>.
2. Secure the lower bag strap by pulling it over the base of the golf bag.
  - Secure the top bag support strap.
  - Select a good position for the elasticised straps to be put around the golf bag. Adjusting the length of the top bag support strap. The rounded plastic bar on the longer strap can be adjusted to ensure the bag is securely in place.
  - Stretch the longer end of the strap and loop the rounded plastic bar underneath the hook on the shorter end.
  - The top bag support straps should now be connected.







# Ai NAVIGATOR GPS<sup>+</sup>

POWERED BY  sureshot

Please ensure the top bag support straps are hooked in place securely before releasing. Failure to do so could result in injury to the user and/or damage to the Ai Navigator GPS<sup>+</sup>.

## 6.0 OPERATING THE DIGITAL TOP BOX

Please see separate Top Box user manual for further detail on all functions.



### 6.1 START / STOP THE Ai NAVIGATOR GPS<sup>+</sup>



### Ai Navigator GPS<sup>+</sup> Speed Control

Please note the following points regarding the Ai Navigator GPS<sup>+</sup> Speed Control.

1. To select the desired speed, rotate the speed control button. Turning the speed control button clockwise will increase the speed, whilst anti-clockwise will decrease speed. The speed setting range is 1 to 20.
2. The speed setting chosen is displayed in the centre of the screen. Please note you will feel notches as you rotate the speed control. The notches do not indicate a change in speed. The speed will only increase or decrease as the number changes in the display.
3. To start the Ai Navigator GPS<sup>+</sup>, tap the top of the speed control button. The speed setting will always start at 4.





4. Another tap will stop the Ai Navigator GPS<sup>+</sup> and the speed setting will revert to 4.
5. The desired speed can be altered up or down while the Ai Navigator GPS<sup>+</sup> is moving.
6. To activate the park brake stop the Ai Navigator GPS<sup>+</sup> by pressing the speed control button. Turn the speed control button anti clockwise until you hear a click and the speed will be marked as a 'P' to indicate brake has activated.
7. To cancel the park brake start the Ai Navigator GPS<sup>+</sup> by pressing the speed control button.

## 6.2 TURN THE Ai NAVIGATOR GPS<sup>+</sup> ON/OFF

1. Disconnect the battery by sliding the battery connection switch until the red indicator is displayed. Please note this disconnection will also occur automatically when you fold the Ai Navigator GPS<sup>+</sup>.

Please note: When the ON/OFF Switch is used during operation, it will erase any in-game information if you are currently mid-round. Alternatively use the SLEEP mode which maintains all current game information (see point 2).

2. To turn the Ai Navigator GPS<sup>+</sup> Top Box Display off: Hold down the Start/Stop Speed Control Button for five seconds and the display will bring up the sleep mode option. Select 'Enable Sleep Mode'.

3. To reactivate the Top Box Display, whilst the battery is connected, touch the screen to wake the Ai Navigator GPS<sup>+</sup> up.

Please note that the battery will still be connected to the Ai Navigator GPS<sup>+</sup> and will continue to drain whilst connected.

4. To fully shut down the Ai Navigator GPS<sup>+</sup> and prevent the battery from discharging, disconnect the battery as per point 6.3.

The battery can be left on or removed from the Ai Navigator GPS<sup>+</sup>.

## 6.3 BATTERY LEVEL INDICATOR

Battery indication is located on the bottom right-hand corner of the display. It is displayed as a percentage. If you tap the battery icon it will display further details including the remote battery level.

You should always check the battery status before you play golf to ensure there is sufficient charge.



## 6.4 UNIT MEASUREMENTS

You can change from metres / kilometres / yards / miles simply by pressing the Golf Menu on the home screen and selecting the appropriate units. For more information, please refer to the Top Box Manual.

## 6.5 DISTANCE MODES

There are three distance measurement modes. To move between the modes, press the Distance Mode Button (DM) on the left.

Trip odometer: resettable distance measurement can be used to measure how far you hit your shot or to measure how far you have walked for the day.

To reset, simply press the reload button (left side) for 3 seconds until the reading displays “0”.

Next Maintenance: This feature will assist with service reminders which are recommended at each 500km (300 miles) or 6 month period.

Lifetime Odometer: cannot be reset as it is the odometer for the life of the Ai Navigator GPS<sup>+</sup>.

## 6.6 COMPETITION MODE

In the unlikely event that the club you are playing at does not allow the use of distance devices you will need to disable the distances feature on the MGI Ai Navigator GPS<sup>+</sup>.

To disable the distance recording feature, go to settings and select the “COMP MODE” option switch, which will appear on the screen and will turn blue when activated. In addition, the competition mode banner is displayed on the home screen and you cannot select play golf.

To cancel back out of COMP MODE click the same switch until it turns into a white background. (For more information, please refer to the Top Box manual.)





## 7.0 REMOTE CONTROL

**PLEASE NOTE:** Your remote control is located in your MGI Pouch, along with the remote holder clip.



MODEL: NAVIGATOR Ai Remote  
FCC ID : 2BA2LG7GPS  
IC : 30328-G7GPS  
CAN ICES-3 (B)/NMB-3(B)

This device complies with Part 15 of the FCC Rules. Operation is subject to the following two conditions:

1. This device may not cause harmful interference, and
2. This device must accept any interference received, including interference that may cause undesired operation.

## 7.1 CHARGING YOUR REMOTE CONTROL

Before you start using your Ai Navigator GPS<sup>+</sup> you must fully charge the remote control battery for approximately 6 hours using the USB cord provided. The LED will flash while charging. When a full charge is complete, the LED will stay on.

To charge the remote, plug the USB cord into the USB port at the base of the remote. The cable can be plugged into the USB port underneath the Ai Navigator GPS<sup>+</sup> handle, a PC or Laptop for charging.

Alternatively, plug the cable into an AC adaptor (not provided).



To turn on your remote hold the button located on the top of the remote until the blue light appears. If no light appears then it needs to be charged.

To check the remote battery percentage, press the main battery icon on the bottom right of your Ai GPS<sup>+</sup> screen.

We recommend recharging your remote battery when recharging your main battery after each use.

## 7.2 REMOTE LED COLOURS AND STATUS

- Solid Blue: Connected (Paired Mode) & Battery Above 25%
- Blinking Blue: Searching For Bluetooth Connection (Pairing Mode)
- Solid Red: Battery is below 25%
- Blinking Red (Plugged In): Device is Charging and below 75%



- Blinking Green (Plugged In): Device is Charging and above 75%
- Solid Green (Plugged In): Device is fully charged.
- Alternating Red & Blue: Battery is below 25% and Searching For Bluetooth connection.
- Orange Light: Locked

## 7.3 FORWARD ARROW

Press the forward button to start and accelerate the Ai Navigator GPS<sup>+</sup>. The longer you press the button, the faster the Ai Navigator GPS<sup>+</sup> travels. The Ai Navigator GPS<sup>+</sup> will always stop/start at speed setting 4 when using the remote.

## 7.4 DOWN ARROW

The down arrow decreases the speed and initiates reverse. If you are moving forward, the down arrow can be used to decrease speed, the longer the pressure, the slower the speed. If you hold down the button the Ai Navigator GPS<sup>+</sup> will reverse. If you release the down arrow, whilst the Ai Navigator GPS<sup>+</sup> is in Reverse Mode, the Ai Navigator GPS<sup>+</sup> will stop (safety feature).

## 7.5 LEFT AND RIGHT ARROW

When the Ai Navigator GPS<sup>+</sup> is stopped, press the appropriate turn command and keep depressed until the degree of turn is achieved, then press the forward button for the Ai Navigator GPS<sup>+</sup> to go forward. Whilst the Ai Navigator GPS<sup>+</sup> is moving, press the appropriate turn command, and keep depressed until the degree of turn is achieved. Momentary pressure will make a small adjustment to the direction, whilst prolonged pressure will increase the degree of turn and speed of the turn.

## 7.6 PARK BRAKE

The top right hand button allows you to activate park brake on your Ai Navigator GPS<sup>+</sup>. When activated the remote will illuminate green and the Ai Navigator GPS<sup>+</sup> will also show a 'P' on the main screen. To disengage the park brake press any directional button either on the remote or the Top Box.

## 7.7 KEYPAD UNLOCK AND LOCK

The top left hand button allows you to LOCK and UNLOCK the remote. When locked the LED will be illuminated.





This will help eliminate accidental button inputs when storing the remote in your pocket. The STOP button will continue to work, when the LOCK feature is activated.

## 7.8 REMOTE RANGE AND SAFETY STOP

The Ai Navigator GPS<sup>+</sup> can be remotely controlled by up to 100m. If the remote control loses contact with the Ai Navigator GPS<sup>+</sup>, then the automatic safety stop will initiate after five seconds.

This is for the protection of your Ai Navigator GPS<sup>+</sup>, yourself and others. If the Ai Navigator GPS<sup>+</sup> was last activated using the manual controls, the auto safety stop feature will not activate.

## 7.9 PAIRING A REMOTE

If your remote loses pairing with the Top Box or you replace your remote it will need to be paired as follows:

- Turn on Ai Navigator GPS<sup>+</sup>
- Turn on the Ai Navigator GPS<sup>+</sup> remote
- The remote LED will flash blue and red
- The LED will go solid blue once paired

## 8.0 GYROSCOPE STRAIGHT TRACKER NAVIGATION SYSTEM

The MGI Ai Navigator GPS<sup>+</sup> is built with a Patented Gyroscope Straight Tracker Navigation System. This automatic feature ensures the MGI Ai Navigator GPS<sup>+</sup> maintains its direction regardless of the terrain.

The MGI Ai Navigator GPS<sup>+</sup> will automatically brake or accelerate either wheel to maintain its direction.

When the Ai Navigator GPS<sup>+</sup> is controlled by the remote, the navigation system is always ON.

When the Ai Navigator GPS<sup>+</sup> is controlled manually, the navigation system is always OFF.

Tip: On a steep incline or if the Ai Navigator GPS<sup>+</sup> hits a divot or other object, the gradient may force the Ai Navigator GPS<sup>+</sup> off-line. You do not need to adjust the Ai Navigator GPS<sup>+</sup>. The Ai Navigator GPS<sup>+</sup> will work its way back on course.

## 9.0 WARRANTY

### 9.1 WARRANTY POLICY

The MGI Ai Navigator GPS<sup>+</sup> is covered by a limited 3 year manufacturer's warranty from the date of purchase.





Duration of this warranty is:

- 3 years on parts\*
- 3 years on Lithium batteries and chargers

\*MGI or an authorised service centre will repair or replace any parts found to be defective in materials or workmanship under normal use provided that:

- 1.** The MGI Ai Navigator GPS<sup>+</sup> has been properly used, maintained and regularly serviced (see section 10.5)
- 2.** The replacement or repair is performed by an authorised MGI service centre or the owner with MGI approval.
- 3.** The Ai Navigator GPS<sup>+</sup> has been registered online.

Our goods come with guarantees that cannot be excluded under Consumer Law. You are entitled to a replacement or refund for a major failure and for compensation for any other reasonably foreseeable loss or damage. You are also entitled to have the goods repaired or replaced if goods fail to be of acceptable quality and the failure does not amount to a major failure.

This warranty is in addition to other rights and remedies available to the consumer under law. The consumer is responsible for expenses associated with a warranty claim.

To make a warranty claim, cease using the goods immediately and contact MGI directly using the contact details on the back of this User Manual. Proof of purchase is mandatory.

## 9.2 WARRANTY EXCLUSIONS

The following events will void warranty:

- Any alteration performed by non-authorised people or companies.
- Fitting of parts or accessories not recommended by MGI.
- Any damage caused by continued operation of the product after it is known to be defective.
- Damage to the seat and/or seat support bracket on the unit.
- Damage caused by partial or complete ingress of water into motor/gearbox/battery/motor controller and other components.
- Damage caused by the unit being driven into bunkers, other course hazards or clubhouse and carpark hazards.
- Damage caused by golf balls or golf clubs.
- Application of external force to any part of the unit or battery.
- Fusion of motor or electronics through overload or continual stationary operation.





- All implied warranties (save those preserved by statute) are excluded.
- Liability for consequential damages under any and all warranties are excluded to the extent exclusion is permitted by law.

In the event of submersion in water (partial or full) of your Ai Navigator GPS<sup>+</sup>; MGI advises the complete write-off of your Ai Navigator GPS<sup>+</sup>.

The cost of replacing the water-damaged components (including labour) exceeds the price of a replacement Ai Navigator GPS<sup>+</sup>.

If you elect to purchase replacement components, i.e. motors, gearbox, motor controller and electronics, we advise the replacement of ALL components simultaneously.

Replacing individual components on a water-damaged Ai Navigator GPS<sup>+</sup> poses a higher risk of future failure of other components and therefore these parts will not be covered under warranty.

**Please note that MGI does NOT warrant water-damaged batteries and, due to fire risk, under no circumstances should they continue to be used. The battery must be disposed of immediately and responsibly.**

The following events are not covered under warranty:

Normal wear and tear;

- (e.g. tyres, rubber handlebar, elastic straps, paintwork, battery performance, axles threads, charging ports on batteries and remotes, screen glass etc.)

- Minor appearance defects which bear no effect on the operation of the unit and are considered by the manufacturer to be within the accepted standards.

## 9.3 PARTS INSTALLED DURING WARRANTY

Warranty coverage for components installed during a motorised Ai Navigator GPS<sup>+</sup>'s warranty period shall consist of the duration of the Ai Navigator GPS<sup>+</sup>'s warranty period, provided the warranty installation is performed by MGI, an authorised service centre or the Ai Navigator GPS<sup>+</sup> owner on approval.

Replacement of parts under warranty will not extend the warranty of the Ai Navigator GPS<sup>+</sup> or parts.

Warranties are non-transferable. The warranty applied to a product, on purchase, is limited to the original purchaser.



## 10.0 PREVENTATIVE MAINTENANCE PROGRAM

To properly provide for the continued operation of your MGI Ai Navigator GPS<sup>+</sup>, MGI has introduced its Preventative Maintenance Program (PMP).

The PMP consists of work to be carried out by both the owner and authorised service centres.

To maintain the warranty of your MGI Ai Navigator GPS<sup>+</sup>, it is essential that this work is carried out. If the work carried out by the authorised service centre is to replace parts that are part of the maintenance schedule, the owner will be charged for the parts and labour. If the work to be carried out is part of warranty, MGI will bear the cost.

## 10.1 CLEANING YOUR Ai NAVIGATOR GPS<sup>+</sup> [SEE MAINTENANCE SCHEDULE]

For years of good operation, your Ai Navigator GPS<sup>+</sup> requires care and attention:

- Keep your Ai Navigator GPS<sup>+</sup> clean by using a cloth with warm water and a mild detergent.
- Do not hose down your Ai Navigator GPS<sup>+</sup> under any circumstance, as the Ai Navigator GPS<sup>+</sup> has electronic components.
- Ensure that the battery connection switch is free from sand.
- Ensure that the seat stem bracket is free from sand.
- Do not submerge your Ai Navigator GPS<sup>+</sup> in water as it will cause irreparable damage.
- Clean the Ai Navigator GPS<sup>+</sup> battery base when the battery is removed from the Ai Navigator GPS<sup>+</sup>.

## 10.2 REAR WHEEL AXLES MAINTENANCE [SEE MAINTENANCE SCHEDULE]

The rear wheel stub axles need to be lubricated monthly. Remove the rear wheels by depressing the spring clip and at the same time pull off the wheel. Apply Petroleum Jelly or light grease to the stub axles. Use a very small amount as the grease can attract sand. If you play in sandy conditions you should clean the axles and re-lubricate fortnightly.

## 10.3 UPPER AND LOWER BAG STRAP MAINTENANCE [SEE MAINTENANCE SCHEDULE]

The bag straps should be replaced as per the Service Schedule. The upper bag strap can be replaced by:





- Removing the left and right hand straps form the upper bag support.
- Undo and remove the screws holding the strap in position on the bag support.
- Remove and replace both bag straps.
- Insert bag strap securing screws.

## 10.4 CORRECTING THE ALIGNMENT

To access motor trimming hold down speed control button for five seconds. Select motor trimming option and follow the on screen instructions.

## 10.5 FRONT WHEEL MAINTENANCE

The Ai Navigator GPS<sup>+</sup> front wheels should be removed and the shafts cleaned and lubricated regularly. If the o-rings on the shaft need replacing, spares have been supplied in the MGI Pouch.

## 10.6 MGI SERVICE SCHEDULE

It is the owner’s responsibility to ensure that all periodical checks, necessary adjustments and services are carried out. If in doubt please contact the MGI service centre:

**Australia** 1300 644 523

**USA** 1800 617 2990

Any work performed on your MGI Ai Navigator GPS<sup>+</sup> should be recorded on your service record (see page 24) regardless of the type of work carried out.

MGI Ai Navigator GPS <sup>+</sup>	Monthly	6 Monthly	Every 2 yrs	Every 3 yrs
Wipe down the Ai Navigator GPS <sup>+</sup> with a warm cloth after each use [do not hose]	BO			
Lubricate rear wheel stub axles	BO			
Check and tighten nuts and bolts		BO		
Check and tighten handle pivots		BO		
Check alignment of Ai Navigator GPS <sup>+</sup> ensure that it runs straight		BO		
Replace Speed Controller and On/Off switch assembly				BO /SC
Replace rear and front wheels				BO
Replace upper and lower bag straps				BO

BO = Ai Navigator GPS<sup>+</sup> owner can carry out this work  
SC = Charged work to be carried by approved service centre  
BO/SC = The six monthly service can be completed by either an authorised service centre or the owner of the Ai Navigator GPS<sup>+</sup>.



## 10.7 SERVICE RECORD

<b>6 month inspection</b>	Date: Invoice #:	Serviced by: Signature:
<b>1 year inspection</b>	Date: Invoice #:	Serviced by: Signature:
<b>1 ½ year inspection</b>	Date: Invoice #:	Serviced by: Signature:
<b>2 year inspection</b>	Date: Invoice #:	Serviced by: Signature:
<b>2 ½ year inspection</b>	Date: Invoice #:	Serviced by: Signature:
<b>3 year inspection</b>	Date: Invoice #:	Serviced by: Signature:
<b>3 ½ year inspection</b>	Date: Invoice #:	Serviced by: Signature:
<b>4 year inspection</b>	Date: Invoice #:	Serviced by: Signature:
<b>4 ½ year inspection</b>	Date: Invoice #:	Serviced by: Signature:
<b>5 year inspection</b>	Date: Invoice #:	Serviced by: Signature:
<b>5 ½ year inspection</b>	Date: Invoice #:	Serviced by: Signature:
<b>6 year inspection</b>	Date: Invoice #:	Serviced by: Signature:





## 11.0 SERVICE AND REPAIR CENTRES

For all servicing, please do not go back to your place of purchase.

To find your nearest service centre visit [www.mgigolf.com](http://www.mgigolf.com)

For warranty repairs to be authorised you MUST provide proof of purchase. Please keep this with you as well as your serial number you can record in this manual. It is most important you register your MGI Ai Navigator GPS<sup>+</sup> online for warranty purposes.

## 12.0 PURCHASING PARTS AND ACCESSORIES

You are welcome to service your Ai Navigator GPS<sup>+</sup> out of warranty, by purchasing parts directly from MGI. Please call or email to discuss the right parts and instructions.

## 13.0 FAQ

**Q: My Ai Navigator GPS<sup>+</sup> is not tracking straight.**

A: Please see Ai Navigator GPS<sup>+</sup> Motor Trimming in section 10.4

**Q: Can I replace the remote battery?**

A: The remote control is 1PX7 so is waterproof to 1m for up to 30 mins. Given the enclosed casing the battery cannot be replaced.

**Q: How often do I charge my remote?**

A: Your remote battery is a long life lithium battery designed to last for over 3 years old. However it will need to be charged every 5-10 rounds depending on game usage. Refer to the Ai Navigator GPS<sup>+</sup> battery screen for capacity.

**Q: What increments does my remote battery level indication reflect?**

A: The Battery indication moves in 25% increments.

**Q: Does the handle have a USB charging port?**

A: Yes, under the handle are two charging points. A USB and USB-C (please check the exact names)

**Q: I would like to have my MGI Ai Navigator GPS<sup>+</sup> serviced. Who do I call?**

A: Refer to section 14.0 for further information about getting your Ai Navigator GPS<sup>+</sup> serviced.



## 14.0 MGI CONTACT INFORMATION

### MGI AUSTRALIA

**Service Email:** [customerservice@mgigolf.com](mailto:customerservice@mgigolf.com)

**Live Chat:** visit [mgigolf.com](http://mgigolf.com)

**Toll Free within Australia:** 1300 644 523 (excludes mobiles) Western Australia/ Internal phone +61 3 8872 6700

**Local Service Centres:**

visit [mgigolf.com](http://mgigolf.com) to locate you local service centre.

### MGI USA

**Service Email:** [serviceusa@mgigolf.com](mailto:serviceusa@mgigolf.com)

**Live Chat:** visit [mgigolf.com](http://mgigolf.com)

**Telephone:** 1800 617 2990

### MGI CANADA

**Service Email:** [servicecanada@mgigolf.com](mailto:servicecanada@mgigolf.com)

**Live Chat:** visit [mgigolf.com](http://mgigolf.com)

**Telephone:** 1800 617 2990

### MGI GLOBAL

**Sales Email:** [globalsales@mgigolf.com](mailto:globalsales@mgigolf.com)

**Service Email:** [globalservice@mgigolf.com](mailto:globalservice@mgigolf.com)

**Live Chat:** visit [mgigolf.com](http://mgigolf.com)

**Local Service Centres:**

visit [mgigolf.com/pages/international-stockists](http://mgigolf.com/pages/international-stockists) to find contact information for your local MGI distributor and/or service agent.

Please refer to **[mgigolf.com](http://mgigolf.com)** to find the distributor in your country.





# AI NAVIGATOR GPS+

## Top Box Manual

VERSION 1.0





## Contents

<b>1.0 Initial Set-up</b>	04
1.1 First Bootup	04
1.2 Registration	04
1.3 App Download	05
<b>2.0 The Home Screen</b>	05
<b>3.0 Golf Menu</b>	06
3.1 Toggling Metres and Yards	06
3.2 Men/Women par selection	06
3.3 Registering Handicap	06
<b>4.0 Play Golf</b>	07
4.1 Course Selection	07
4.2 Round Timer	07
4.3 Score Keeping	07
4.4 Changing Hole	08
4.5 Distance Function	08
4.6 Reporting a Mapping Issue	08
<b>5.0 Rounds</b>	10
5.1 Checking Course Par	10
5.2 Viewing Round Summaries	10
<b>6.0 Settings</b>	11
6.1 Select/Change Wi-fi Connection	11
6.2 Select/Change Bluetooth Connection	12
6.3 Competition Mode	12
6.4 Updating a Course	12
6.5 Updating the Ai Navigator GPS <sup>+</sup>	13
6.6 Time Settings	13
6.7 Language Selection	14
6.8 Dark Mode	14
6.9 View Firmware Version	14
6.10 Demo Mode	15
6.11 Removing Paired Remote	15





<b>6.12</b>	Reverting to Default Settings	16
<b>7.0</b>	<b>Ai Navigator GPS<sup>+</sup> Status</b>	16
<b>7.1</b>	Viewing Battery Status	16
<b>7.2</b>	Adjusting Screen Brightness	17
<b>7.3</b>	View Odometer & Maintenance	17
<b>8.0</b>	<b>Miscellaneous</b>	18
<b>8.1</b>	Sleep Mode	18
<b>8.2</b>	Trimming The Motors	18
<b>9.0</b>	<b>Frequently Asked Questions</b>	19



## 1.0 INITIAL SET-UP

### 1.1 FIRST BOOT-UP

- When powering on your Ai Navigator GPS<sup>+</sup>, please note it will take a few moments to boot.
- Next, the Ai Navigator GPS<sup>+</sup> will need to be connected to a Wi-Fi network to update to the latest firmware version and to allow user registration.
- If an update is required, the Ai Navigator GPS<sup>+</sup> will prompt you to update firmware – MGI recommends the Ai Navigator GPS<sup>+</sup> is always up to date prior to usage.
- Once rebooted, you will be prompted to register your Ai Navigator GPS<sup>+</sup>. Registering will allow access to hole view mode, round history, and advanced scoring statistics.

### 1.2 REGISTRATION

To register your Ai Navigator GPS<sup>+</sup>, please key the following details when prompted.

- First and Last name.
- Email address
- Phone number

You will need to create a password to keep your MGI Customer Account secure. Finally, agree to MGI's Terms and Conditions.

< **Let's Finish Up!**

Nick Jones  
njones@mgitrolley.com  
+1 999-999-9999  
S/N 86822045213659


☒ By checking this box, I agree to the privacy policy and the terms & conditions.

☒ I would like to receive newsletters, promotions and offers from MGI, and its affiliate brands.

Finish

< **Terms & Conditions**

Scan the QR code below to read the full Terms & Conditions for your trolley.



Close

< **Register Device**

John Smith  
john@smith.com  
888-555-4569

☒ By checking this box, I agree to the privacy policy and the terms & conditions.

☒ I would like to receive newsletters, promotions and offers from MGI, and its affiliate brands.

Step 3 of 3

Finish

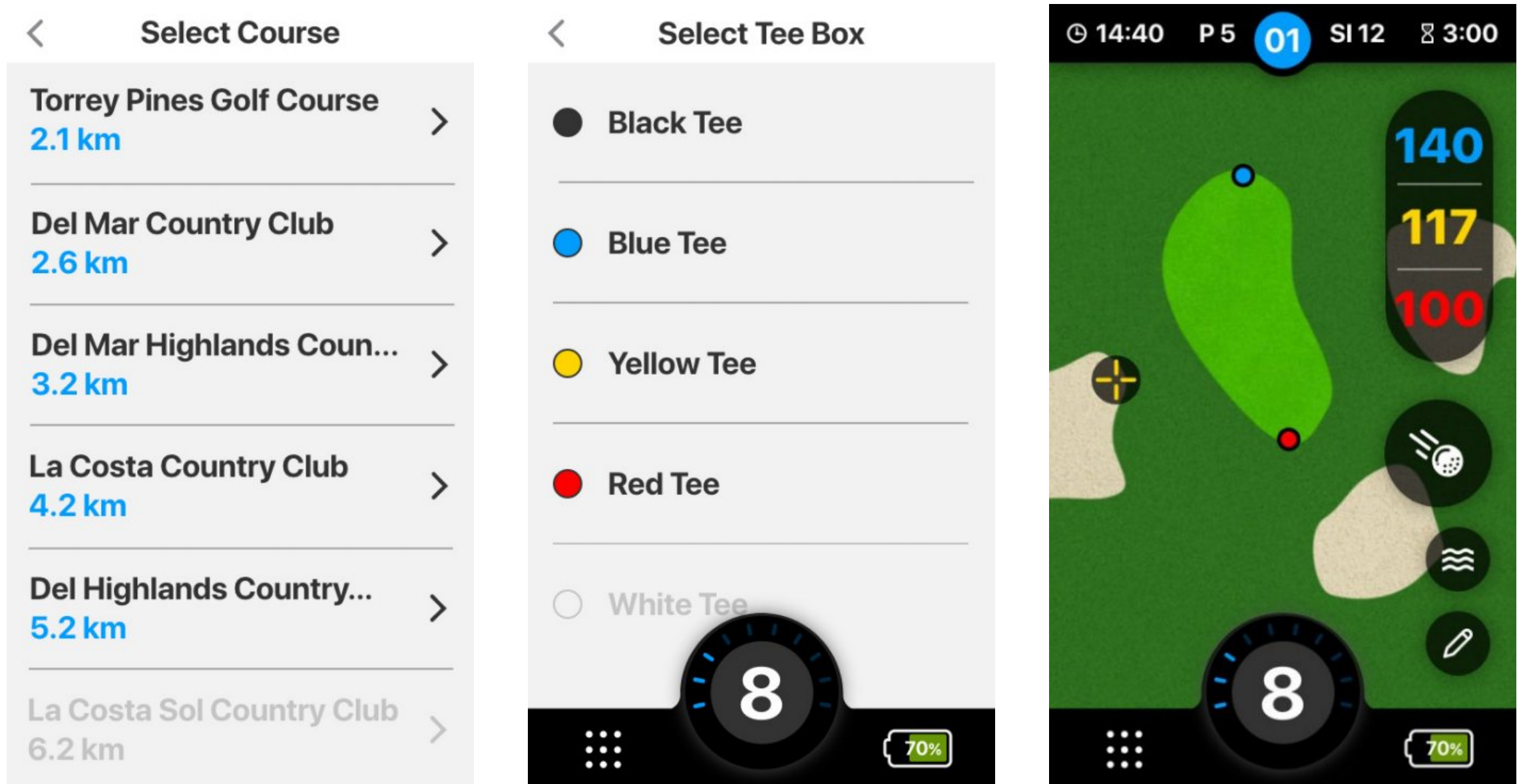




# AI NAVIGATOR GPS<sup>+</sup>

POWERED BY  sureshot

The Ai Navigator GPS<sup>+</sup> will now begin to populate the courses closest to your location and you can start enjoying your new purchase!



## 1.3 APP DOWNLOAD

The integrated high performance GPS system delivers fast and accurate distances to all parts of the course. This clear view of the hole will be further enhanced by the complimentary interactive MGI App. The App comes with maps, scoring and can be your MGI Sureshot handheld device which can be taken anywhere. When connected via Bluetooth you will receive notifications from your phone onto your Ai Navigator GPS<sup>+</sup> screen, giving alerts to SMS, emails and incoming calls.

- **Registration Email**

When you register your Ai Navigator GPS<sup>+</sup> you will receive an email recommending you to download the MGI App. From the email you'll be able to click the link and download it in the app store/ google play store.

- **Key Information**

Simply fill in the necessary information in the app and you will have access to the apps features. If you registered on your Ai Navigator GPS<sup>+</sup> then you will need to simply log into the app with the same details you used to register.

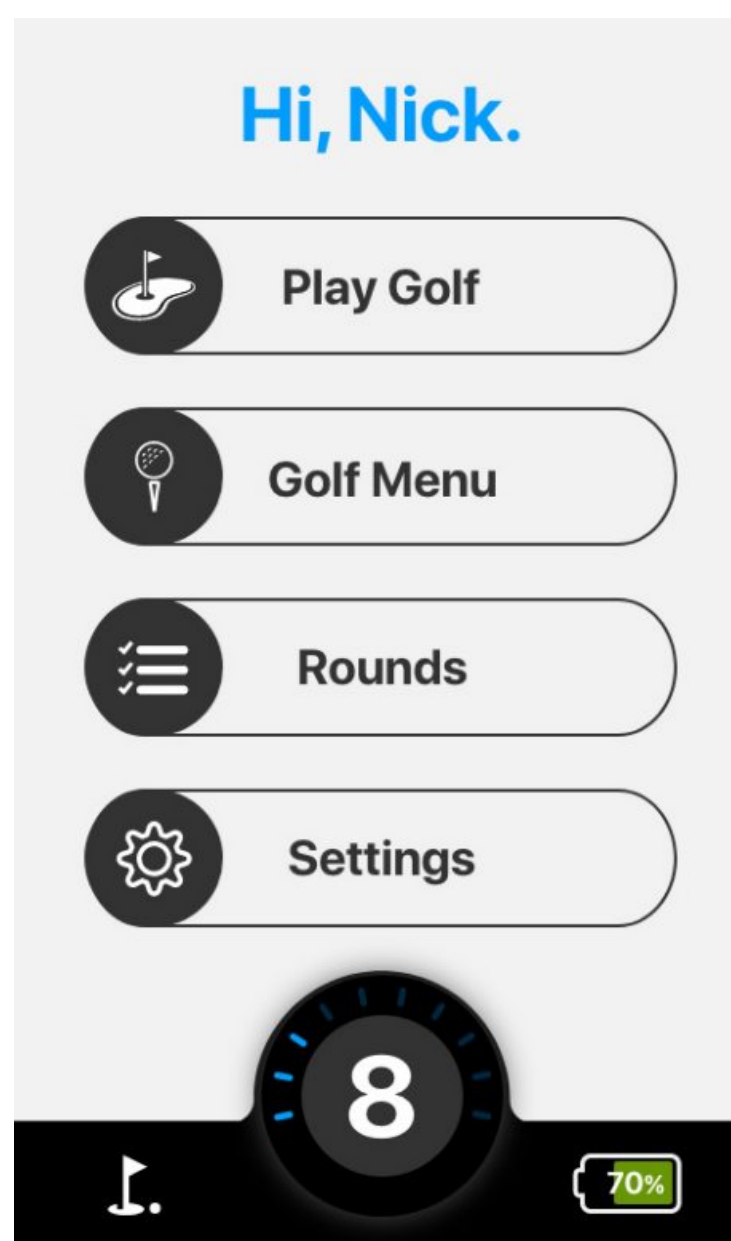
*\*MGI App currently only available for iOS. Android coming soon.*

## 2.0 HOME SCREEN

From the Home Screen you will be able to select from the following;

- Tap Play Golf to select your course and commence the round (See section 6.0 for more information).
- Tap Golf Menu to change you round preference and register your handicap (See Section 3.0 for further information).

- Tap Rounds to view round history (See Section 12.0 for further information).
- Tap Settings to change your Ai Navigator GPS<sup>+</sup> preferences (See Section 4.0 for further information).
- Tap the FLAG icon to bring up the course map.
- Tap BATTERY icon to view Ai Navigator GPS<sup>+</sup> battery and connectivity status (See section 7.1 for further information).
- To return to the Home Screen from the Golf Map or the Status screen tap the 9 DOTS icon located on the left bottom corner.
- To return to the Home Screen from Rounds, Golf Menu or Settings screens tap the ARROW icon located on the left top side.



## 3.0 GOLF MENU

### 3.1 TOGGLING METRES AND YARDS

To change the unit preference between metres and yards, tap the Golf Menu then tap the preferred option.

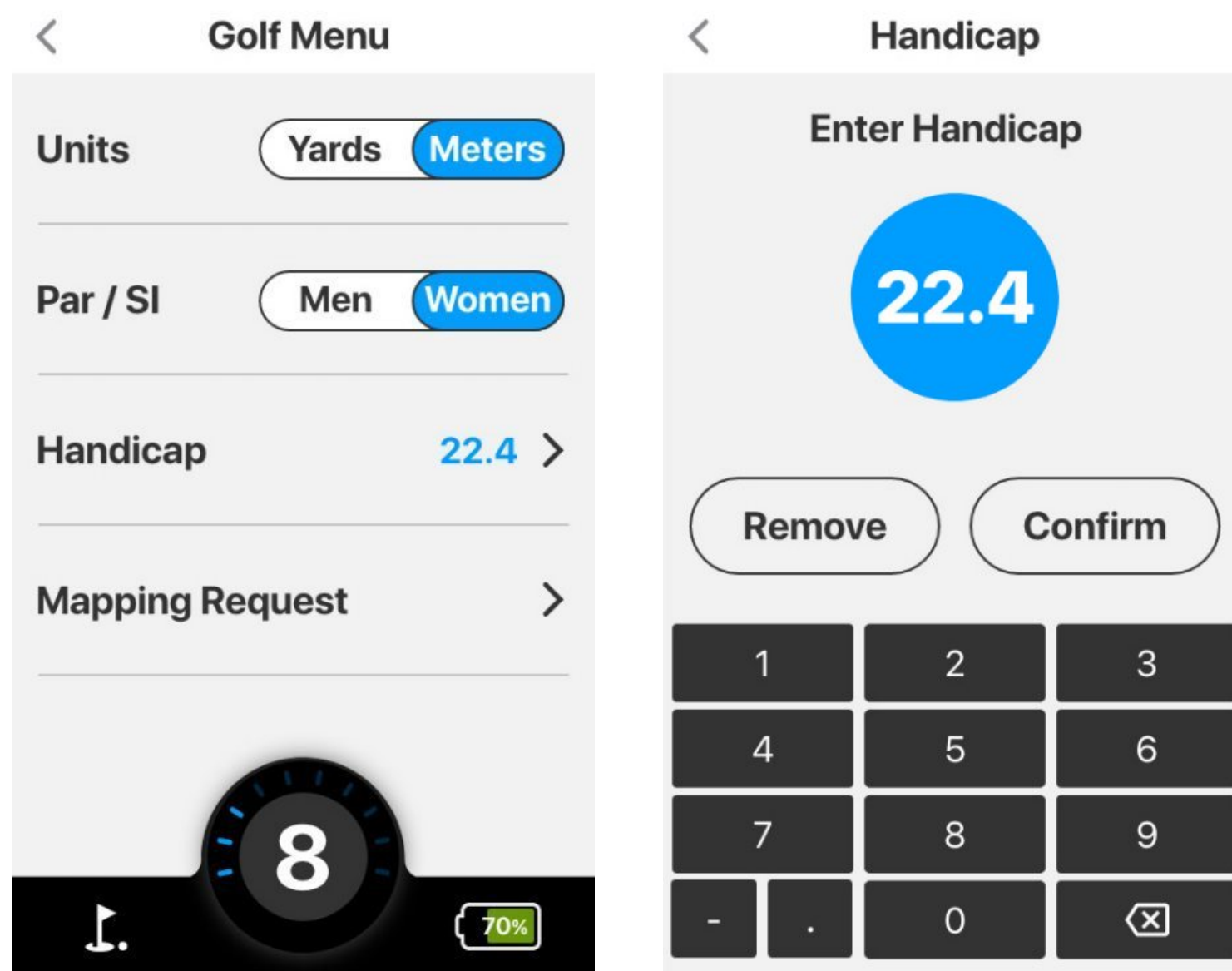
### 3.2 MEN/WOMEN PAR SELECTION

To change your par preference between men and women, tap Golf Menu then tap the preferred option.

### 3.3 REGISTERING HANDICAP

To choose the handicap, tap Golf Menu from the Home Screen, then tap the handicap option, from there type in your playing handicap.



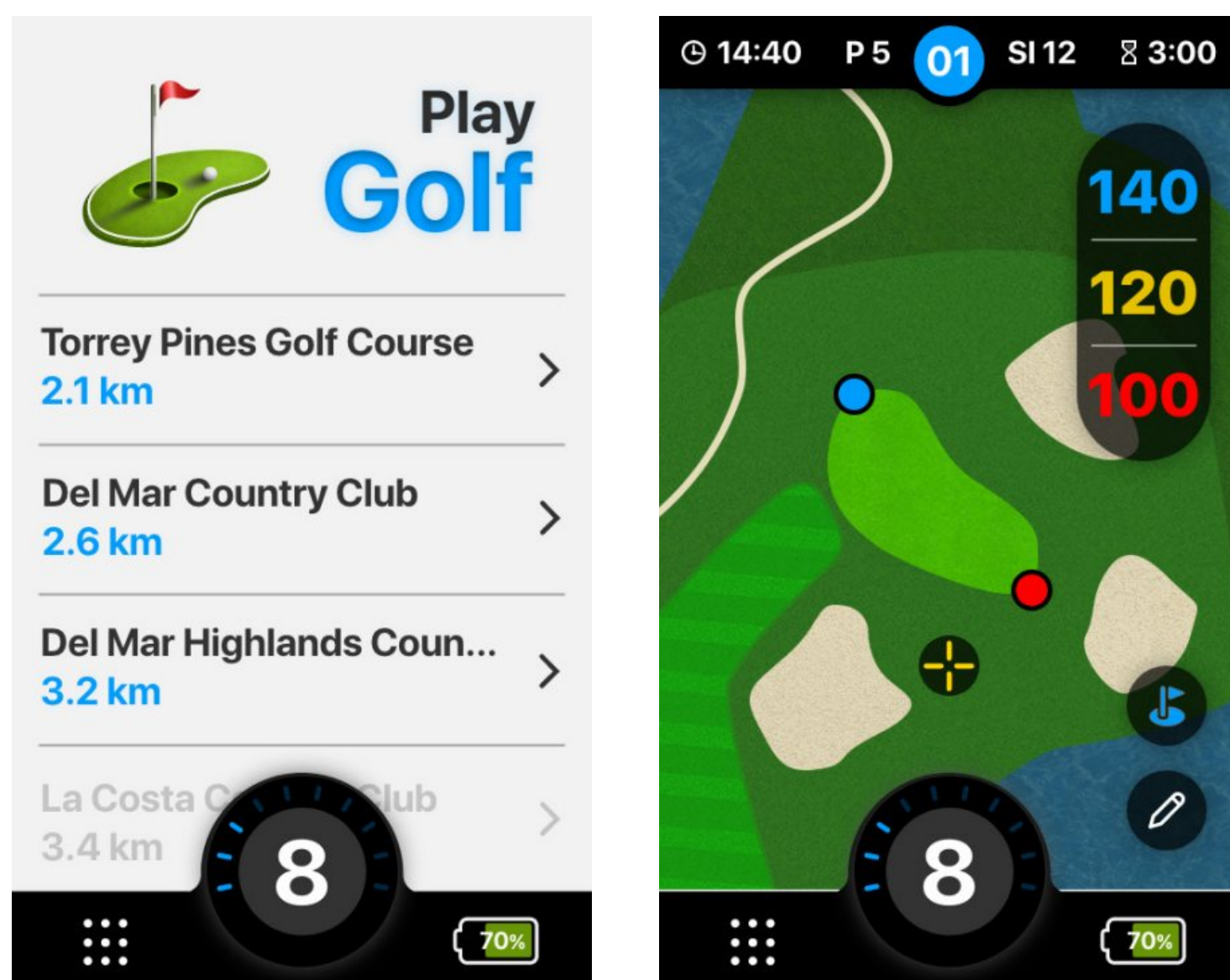


## 4.0 PLAY GOLF

To get to the Play Golf screen, tap Play Golf from the main screen.

### 4.1 COURSE SELECTION

The Ai Navigator GPS<sup>+</sup> will display the closest golf courses. After selecting the preferred course, tapping it will take you to the below screen. The coloured numbers in the top right indicate the distance from your ball to the different ends of the green. The top left of the screen working from left to right indicates the current time, par for the current hole, stroke index for the hole and round time.



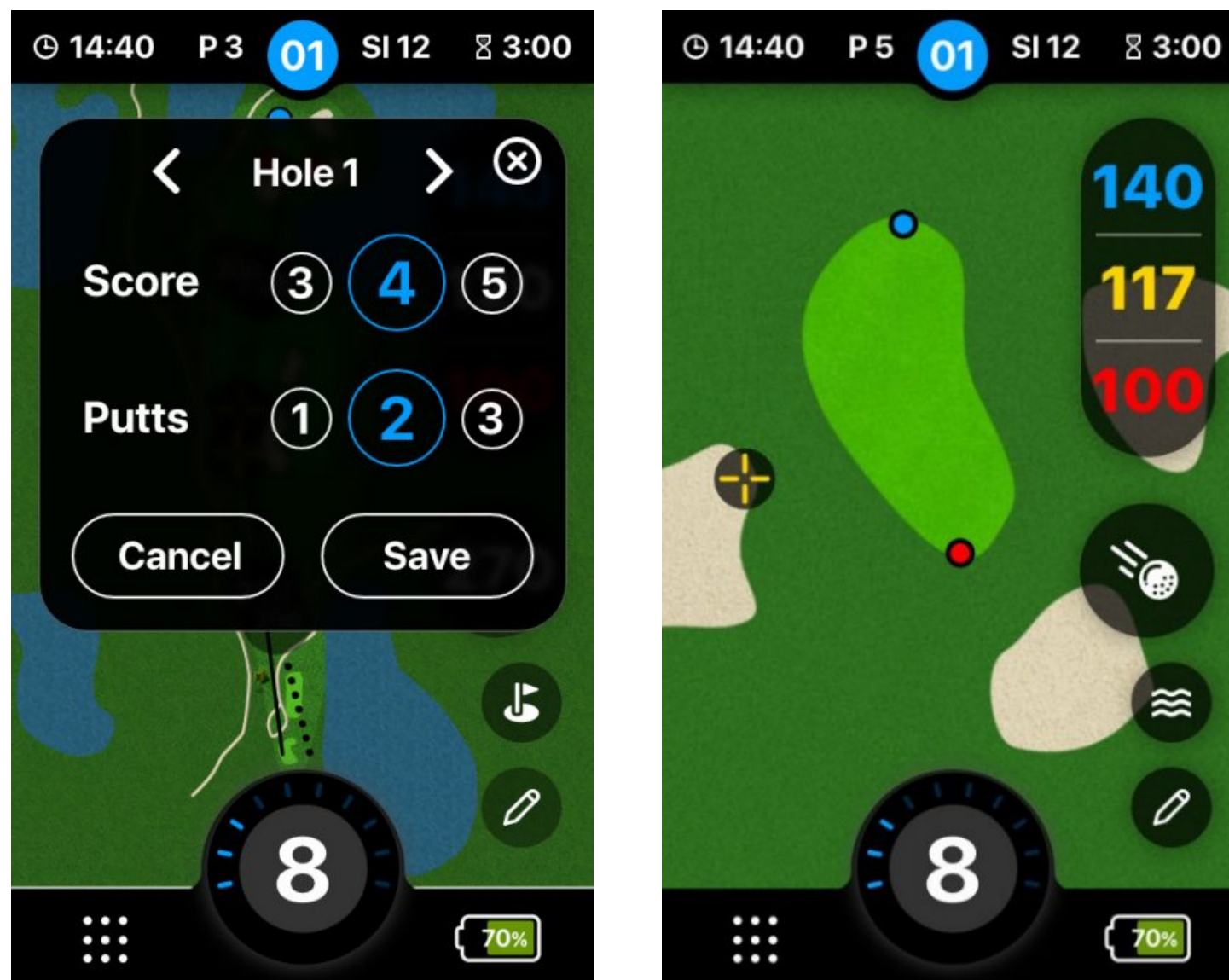
### 4.2 ROUND TIMER

To see how a round has been played, tap the timer in the top right-hand corner the screen. Reset and pause the time using the reset and pause buttons on screen.



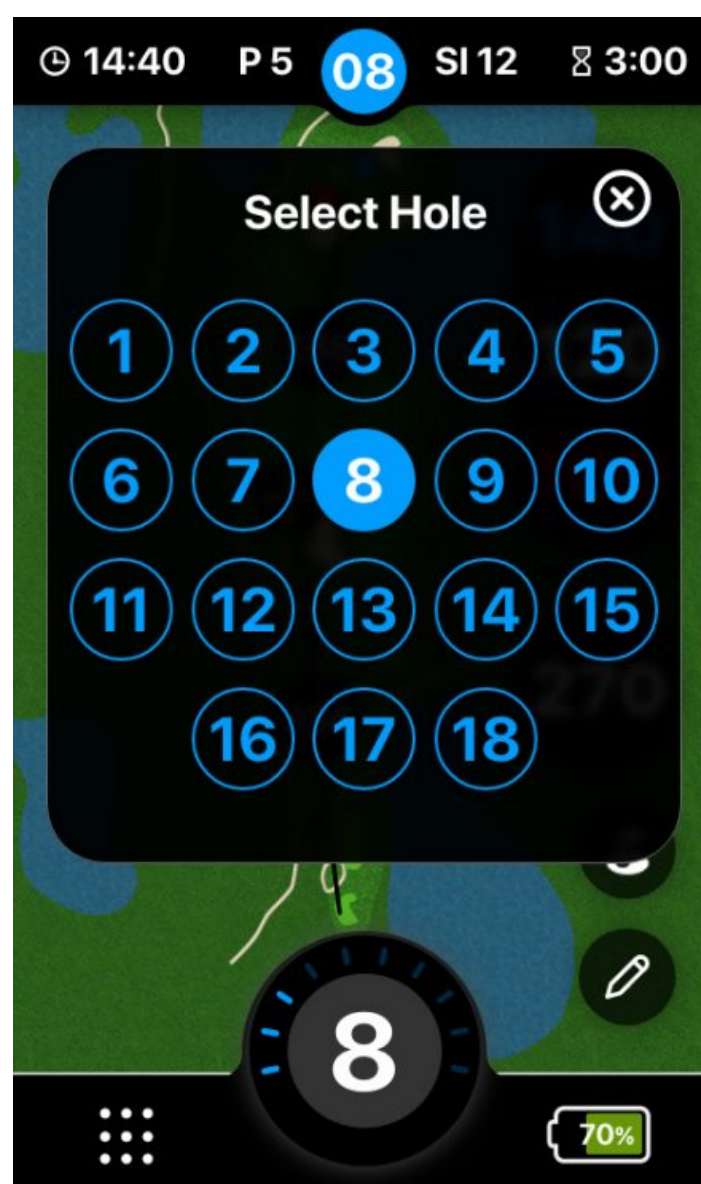
## 4.3 SCORE KEEPING

To enter the score in on each hole, tap the pencil symbol in the bottom right of the screen. You can select how many shots taken and you can also select how many putts taken.



## 4.4 CHANGING HOLE

To change hole, tap the arrow after entering in the score for the hole as seen above. Alternatively, select any hole from the course which will let you skip over holes if needed.



## 4.5 DISTANCE FUNCTION

Tap the screen where your ball is situated during the hole to see the distance between the ball and the hole. Tapping on the screen will place the yellow marker to indicate distance. The flag on the Play Golf screen displays a closeup of the green for the current hole.





## 4.6 REPORTING A MAPPING ISSUE

- Golf courses change continually; it is advised to report any inaccuracies as they are found. To do this, tap the Golf Menu from the main screen, then tap mapping request.
  - Once on the mapping request screen, tap Next to report the mapping issue, from there choose the hole on the course that requires correcting.
  - After choosing the hole, select an option to indicate the specific issue of the map.
1. The 'Auto advance not working' option means the holes are not advancing sequentially meaning manual selection for every hole. Tap the option and then tap Next to submit the mapping report request.
  2. The 'Incorrect yardage' option is for reporting incorrect distances across the fairway. Tap the option and then tap Next to submit the mapping report request.
  3. The 'Remap hole' option is for reporting inaccurately mapped courses. Tap the option and then tap Next to submit the mapping report request.
  4. Finally, you can tap 'Other' for all other mapping issue reporting.



< Report Mapping

Would you like to report a mapping issue for this course?

Press Next to begin filling out the information for your request.

Next

< Report Mapping

Select Hole(s)

1

2

3

4

5

6

7

8

9

10

11

12

13

14

15

16

17

18

Next

< Report Mapping

Auto advance not working

Incorrect yardages

Remap hole(s)

Other

< Report Mapping

Check your info below and submit:

South - Torrey Pines Golf Course  
Holes 3, 11, 14  
Incorrect yardages  
john@smith.com

Submit

< Report Mapping

Your request has been submitted.

Typically requests are processed in 5-7 business days.  
Check your email for updates.

Finish

## 5.0 ROUNDS

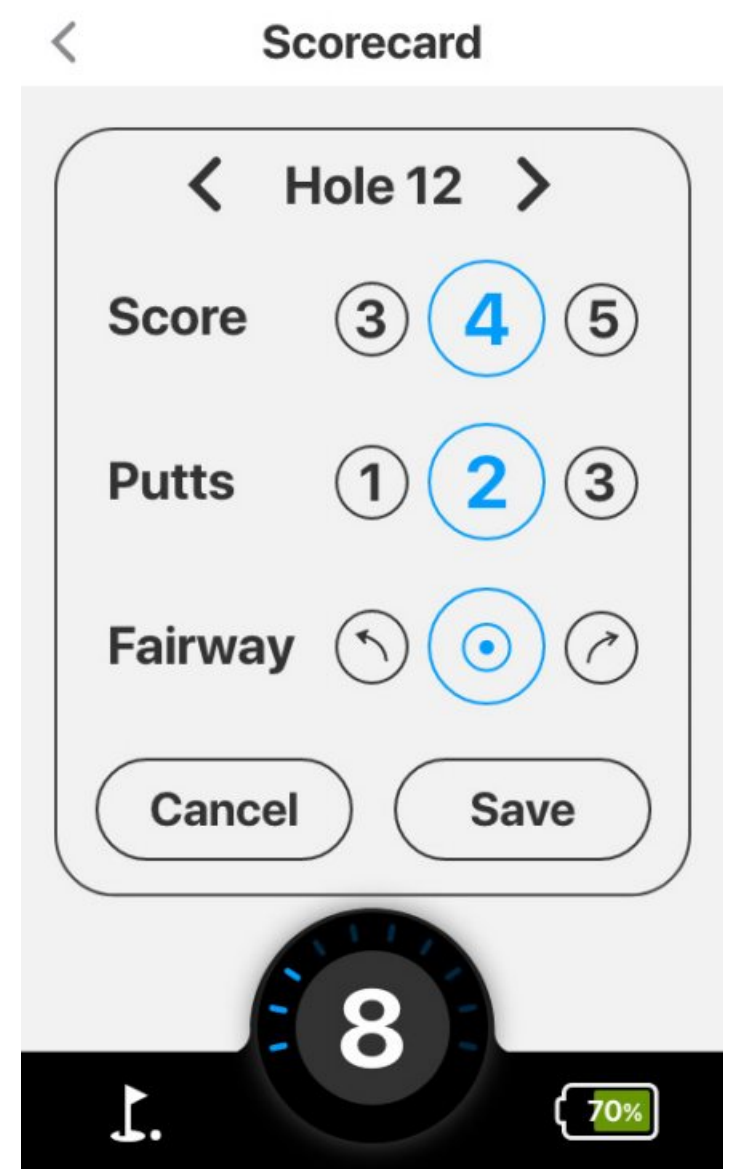
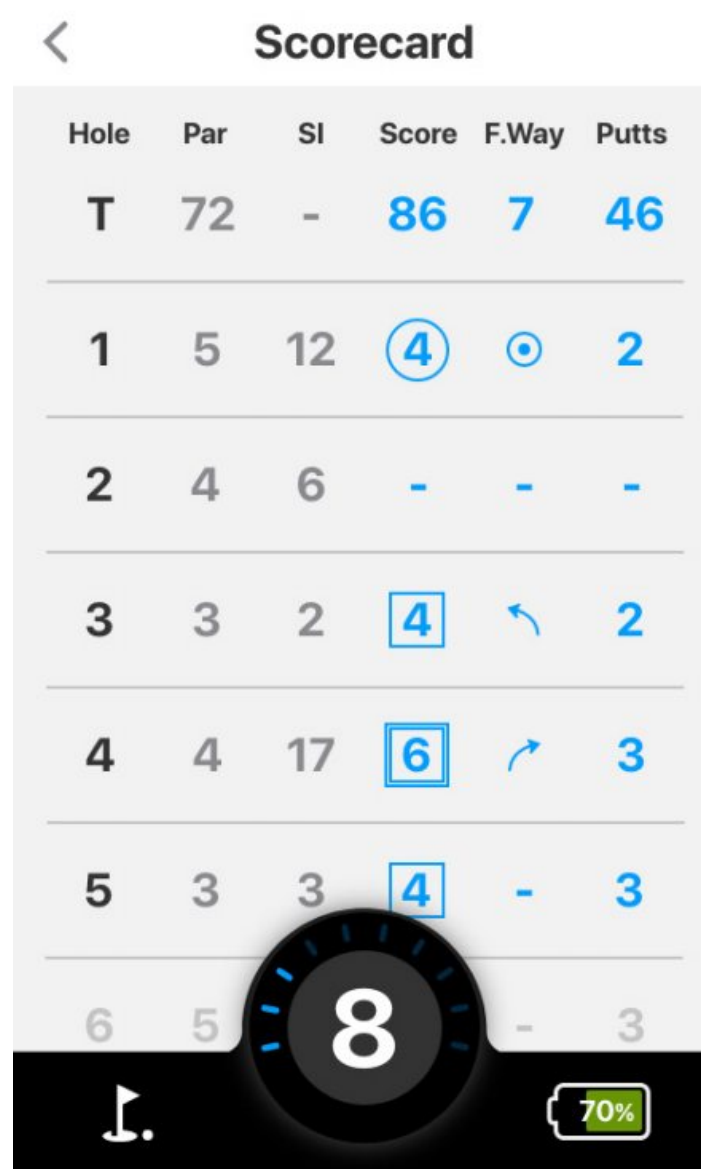
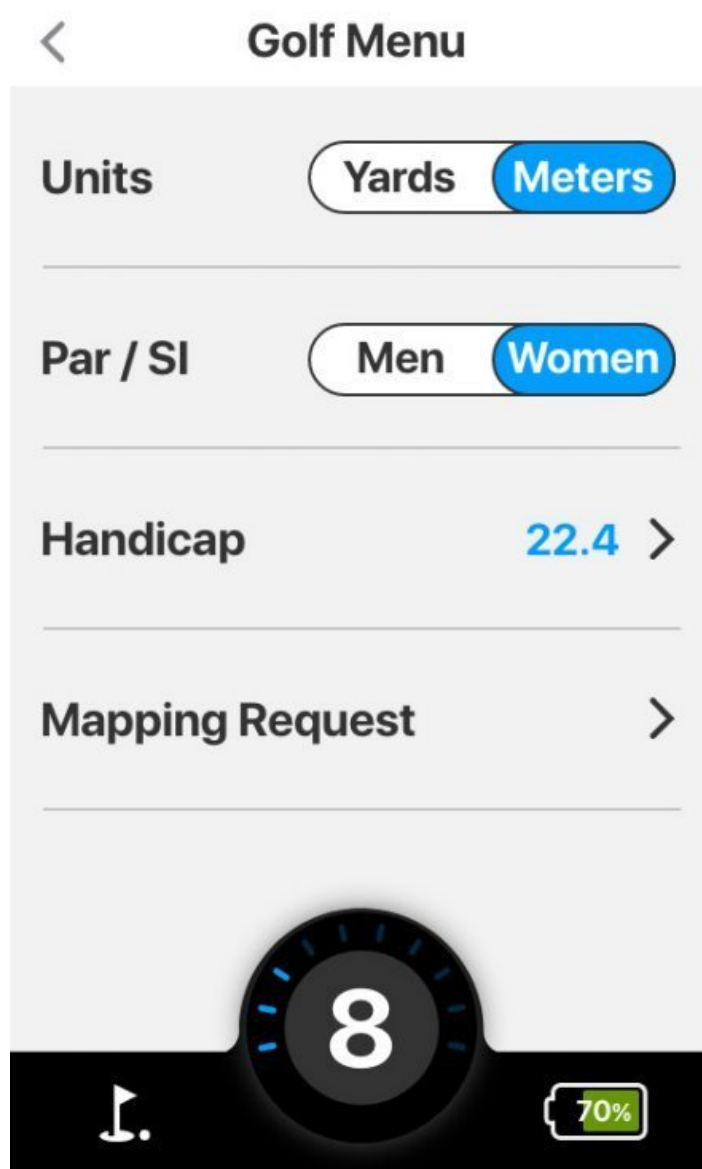
### 5.1 CHECKING COURSE PAR

From the Home Screen tap the Golf Menu; from there tap the Scorecard option to see the par for each hole. Scores can also be entered from this screen.

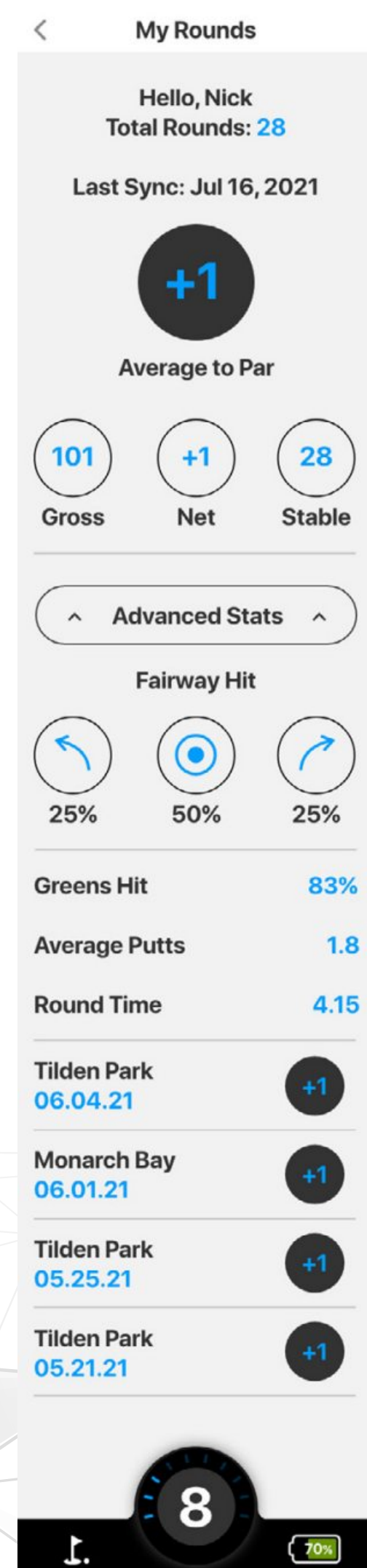
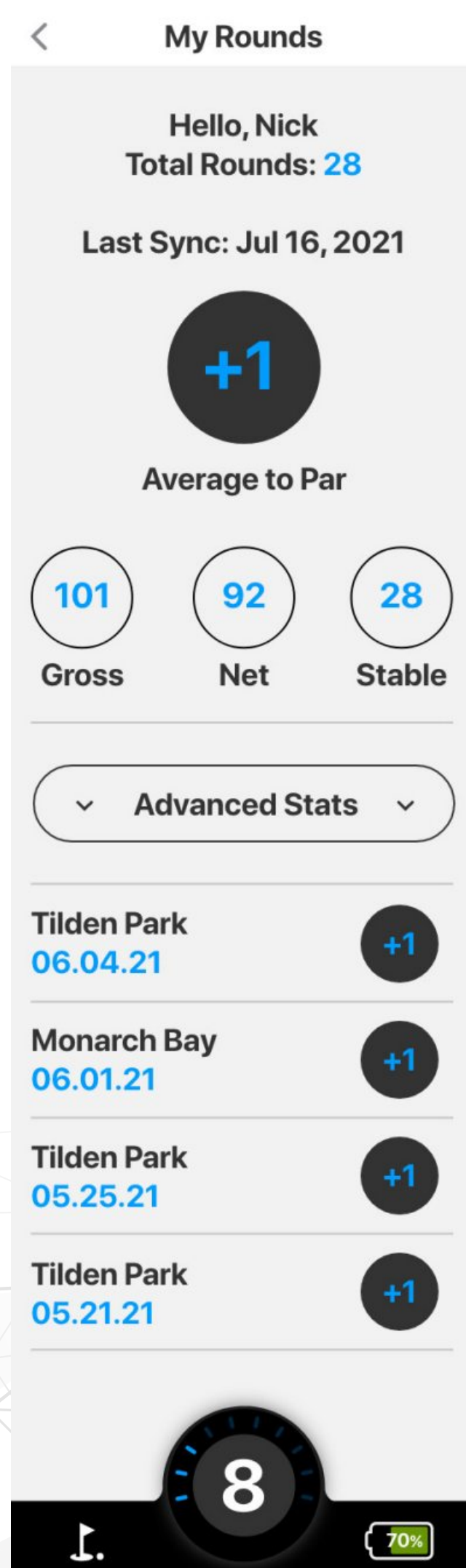
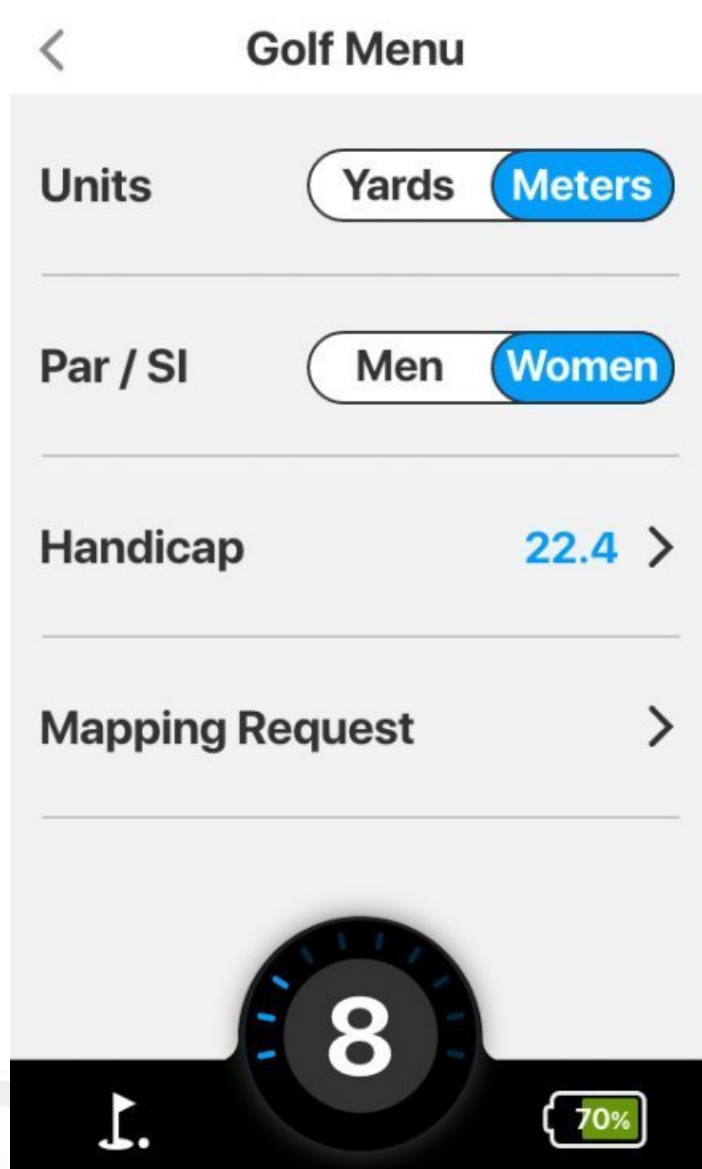
### 5.2 VIEWING ROUND SUMMARIES

- To enter your score for each hole, simply tap the hole, enter the number of strokes taken, then tap save. You can also choose the number of putts you took for this hole.





- To view the round summary for the course, go into the Golf Menu from the Home Screen then tap Round Summary.
- In the Round Summary you can view statistics from your round including your score compared to par and percentage of shots hit on the fairway. Also, in Round Summary you can view time taken, average putts per hole and percentage of hits on the green.

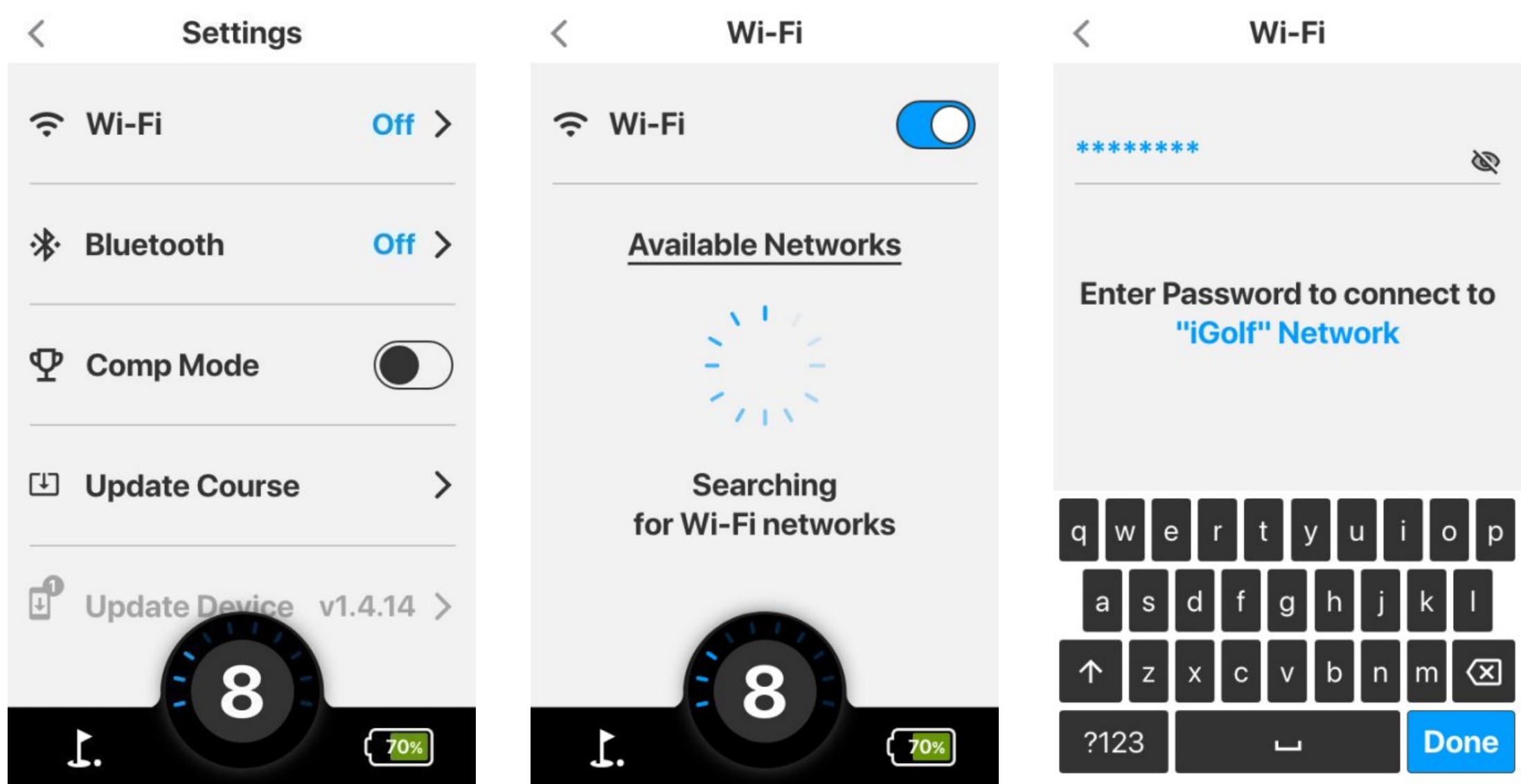




## 6.0 SETTINGS

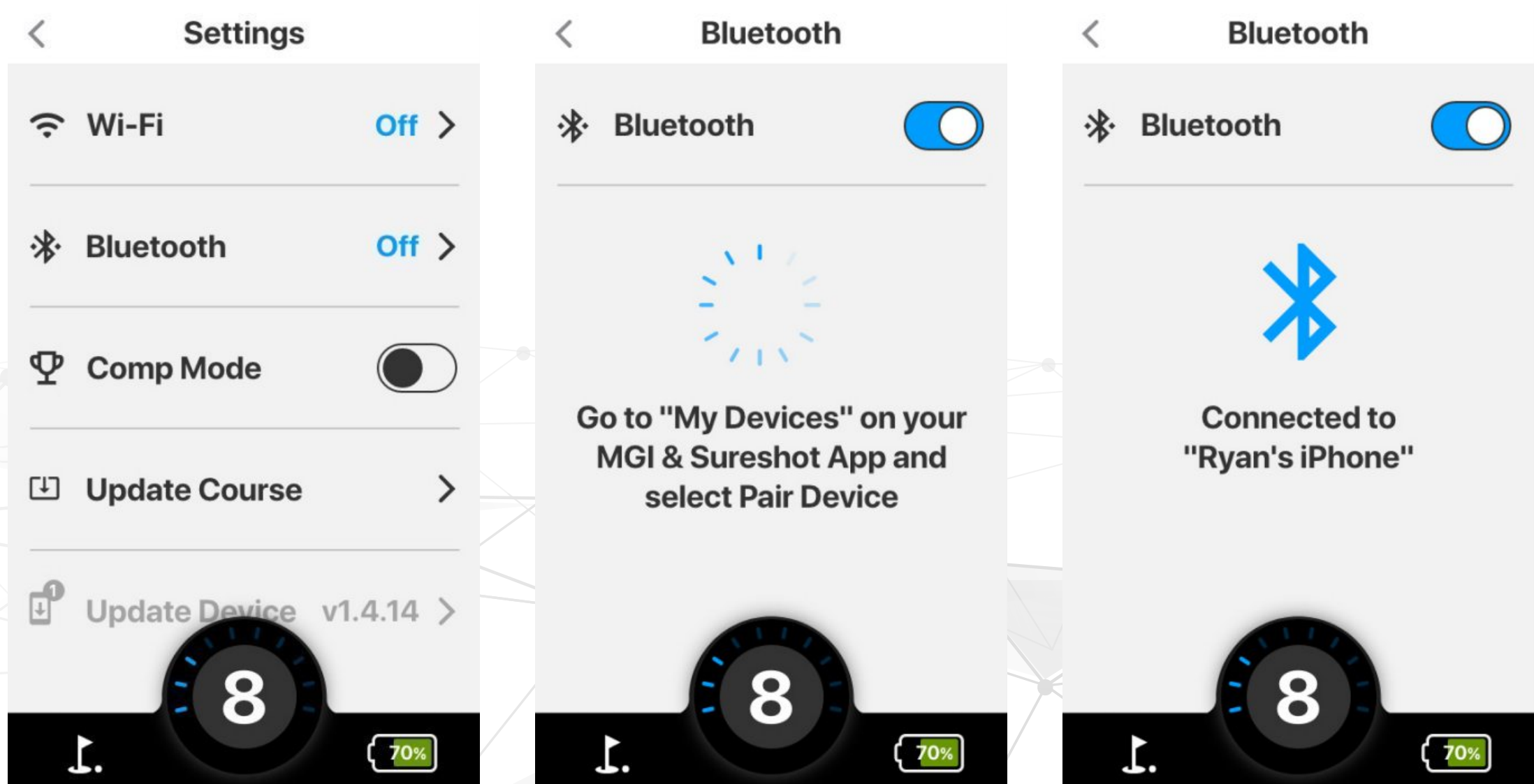
### 6.0 SELECT/CHANGE YOUR WI-FI CONNECTION

- To select or change your Wi-Fi connection, tap the Settings option on the Home Screen, then tap the first option Wi-Fi.
- After selecting the Wi-Fi option, all nearby Wi-Fi connections will populate. Simply tap the Wi-Fi connection that you want to use and enter in the password (if any) to get connected.
- Please note, once connected, you may be asked to update your Ai Navigator GPS<sup>+</sup> software; MGI recommends always updating to the latest version, when available, prior to playing golf.



### 6.1 SELECT/CHANGE YOUR BLUETOOTH CONNECTION

- To select or change your Bluetooth connection, choose the Settings option on the Home Screen then press the Bluetooth button, from there tap the Bluetooth switch so it turns blue.
- After the Bluetooth button turns blue, it will ask you to go to “my devices” on the MGI app which will then allow you to pair your device from the app.



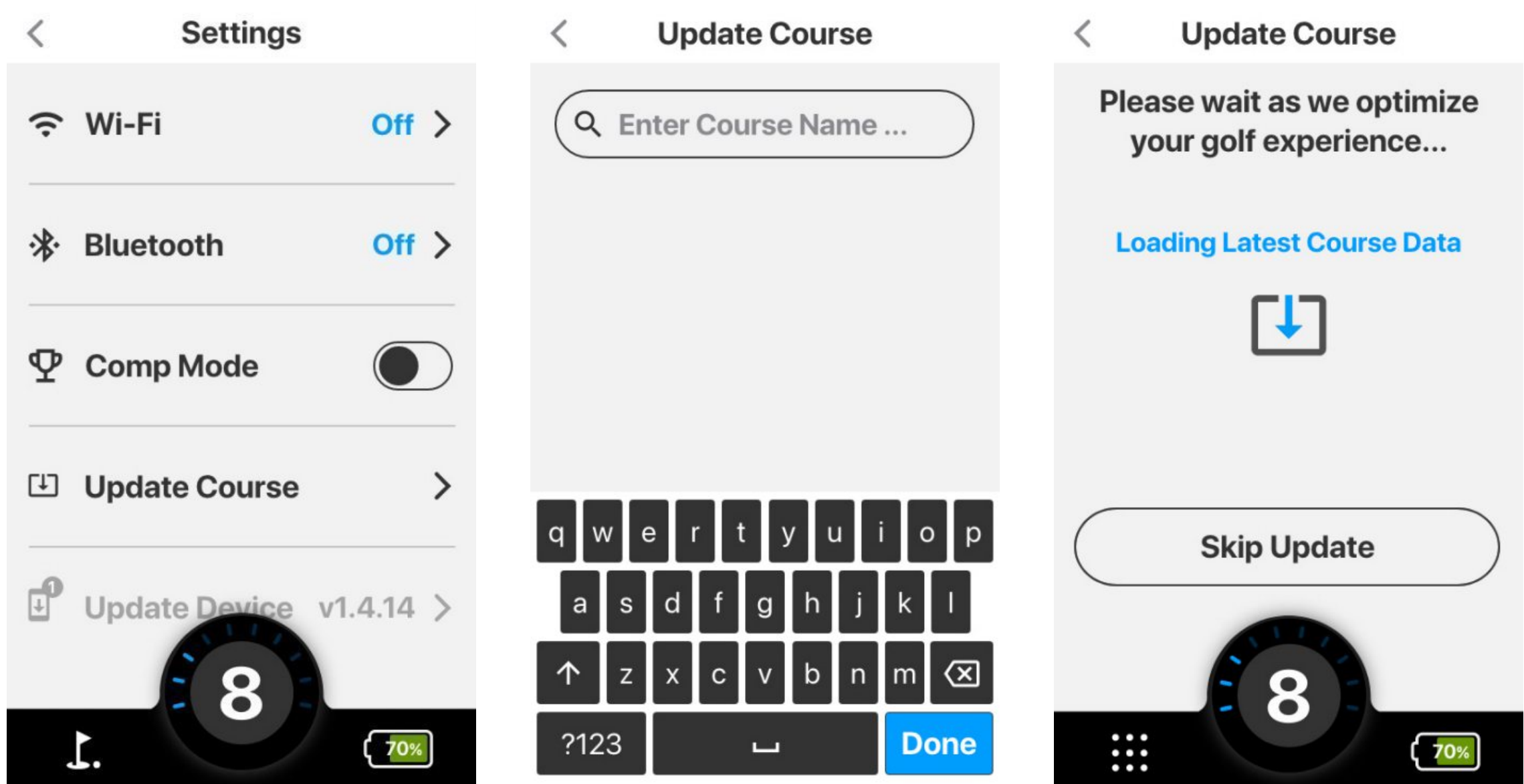


## 6.2 COMPETITION MODE

- To activate competition mode, click the settings option from the main page. From here you can click the switch to turn the comp mode blue which indicates it has been turned on.

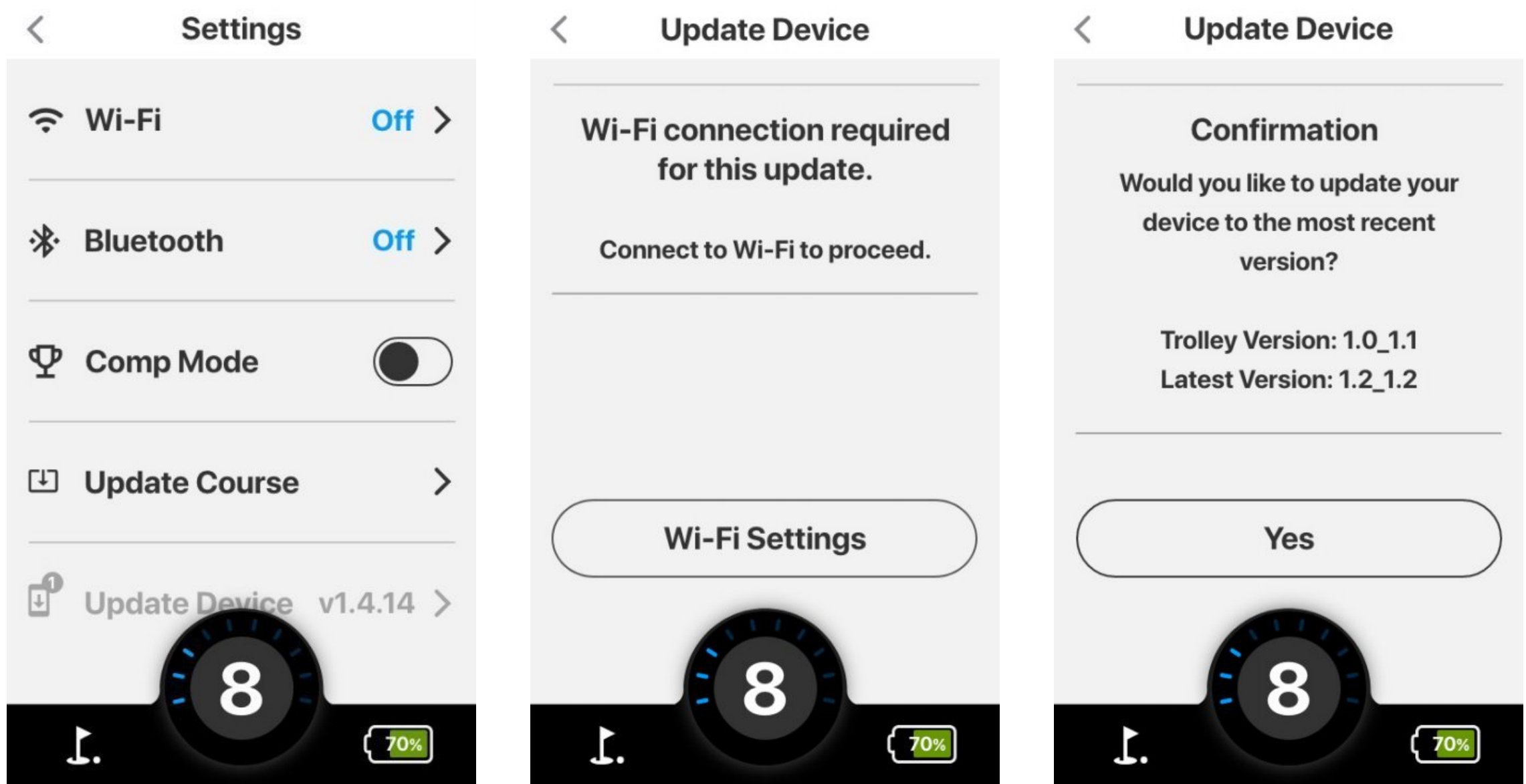
## 6.3 UPDATING A COURSE

- To update a course, tap the Update Course option which can be found in Settings. There you can search for the course needed by typing in it's name.
- From the search you can tap on the course you want to be updated and it will complete the update. To show it is completed, it will project a small blue tick to the right of the course name.



## 6.4 UPDATING THE Ai Navigator GPS<sup>+</sup>

- To update your Ai Navigator GPS<sup>+</sup>, ensure you are connected to Wi-Fi. Go into the Settings area from the Home Screen, scroll down, and tap the Update Device option.
- Your Ai Navigator GPS<sup>+</sup> will show "Up to date" or give you the option to update your Ai Navigator GPS<sup>+</sup> to the newest version available. Follow the on-screen prompt to update.
- After updating your Ai Navigator GPS<sup>+</sup> firmware, you may be prompted to update the firmware on your remote. Follow the prompts as seen in the banner.



## 6.5 TIME SETTINGS

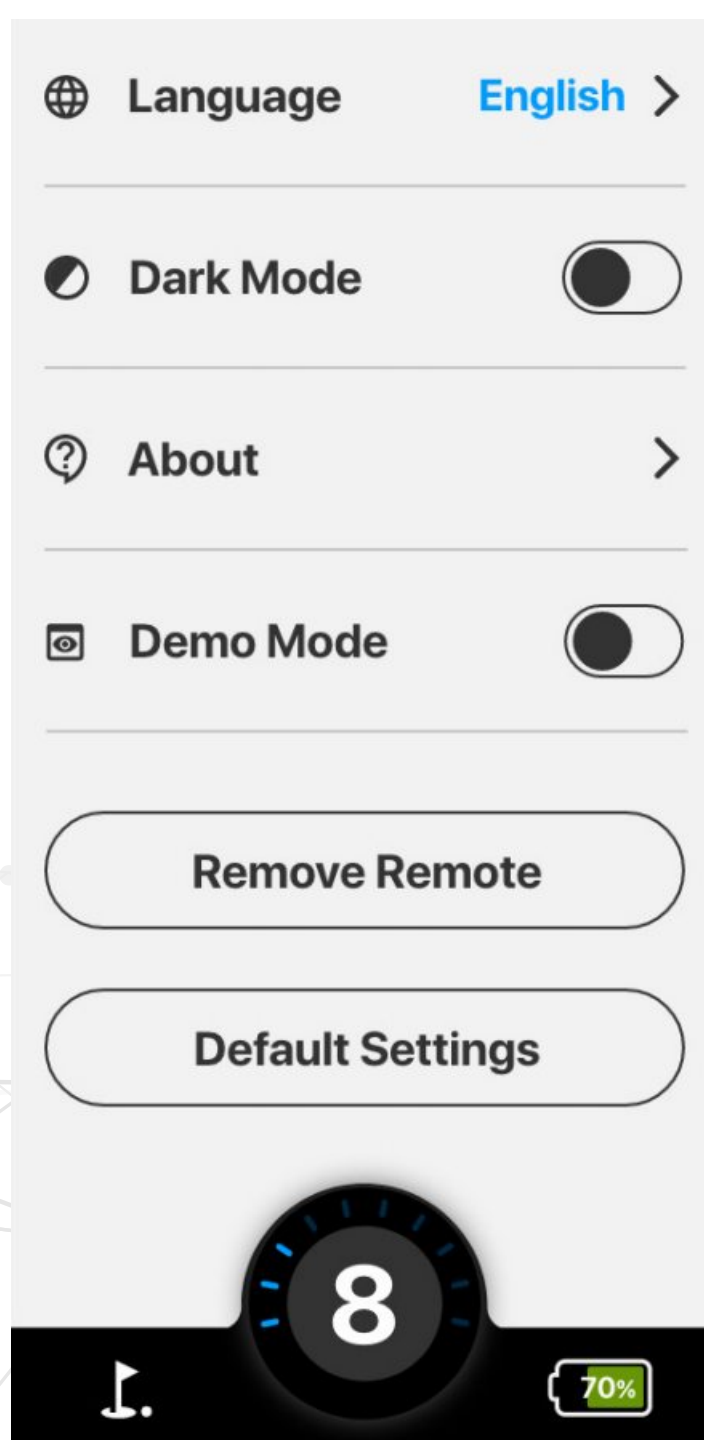
- To change the time Settings on your Ai Navigator GPS+, tap the Settings option from the Home Screen then tap Time. From here you will be able to change your displayed time format, date format and adjust for Daylight Savings.

## 6.6 LANGUAGE SELECTION

- To change the language of your Ai Navigator GPS+, select Settings from the Home Screen then tap Language. From here you can select the preferred language to be displayed.

## 6.7 DARK MODE

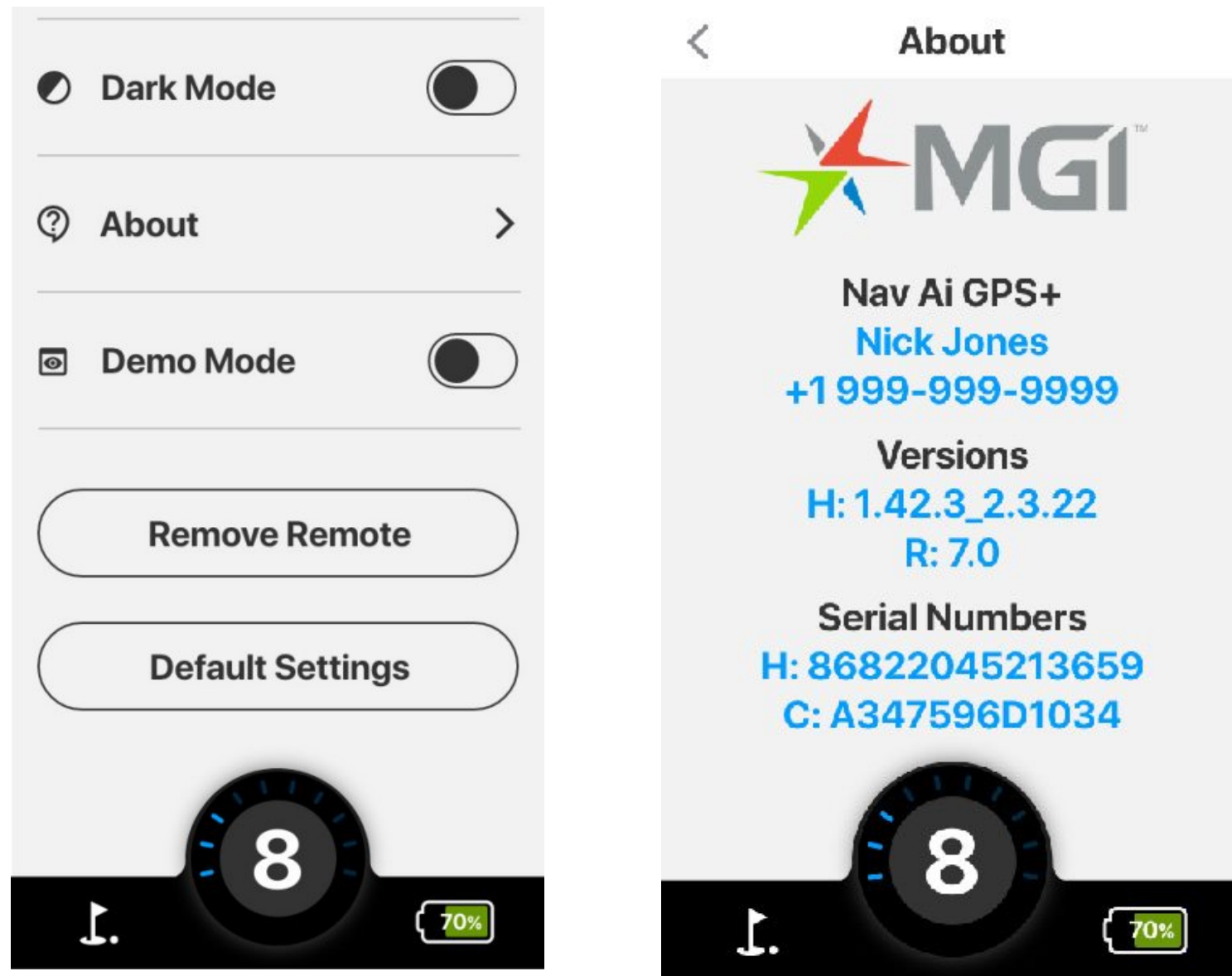
- To turn on Dark Mode, from the Home Screen select Settings, scroll down and toggle Dark Mode on/off.





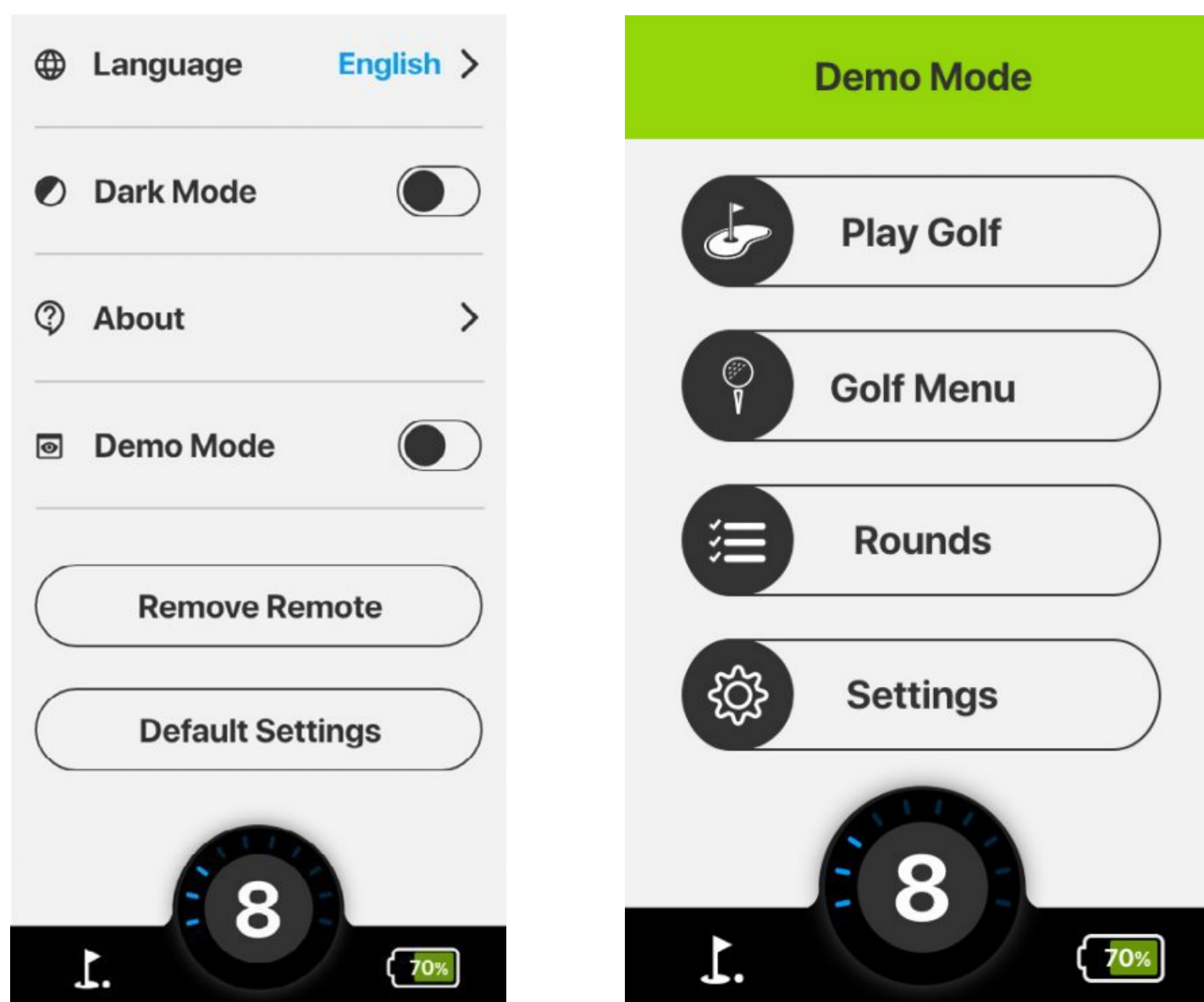
## 6.8 VIEW FIRMWARE VERSION

- To learn more about your Ai Navigator GPS<sup>+</sup>, select Settings from the Home Screen and then tap About.
- The About section will show you information about your Ai Navigator GPS<sup>+</sup> such as the current firmware version and the Serial Number.



## 6.9 DEMO MODE:

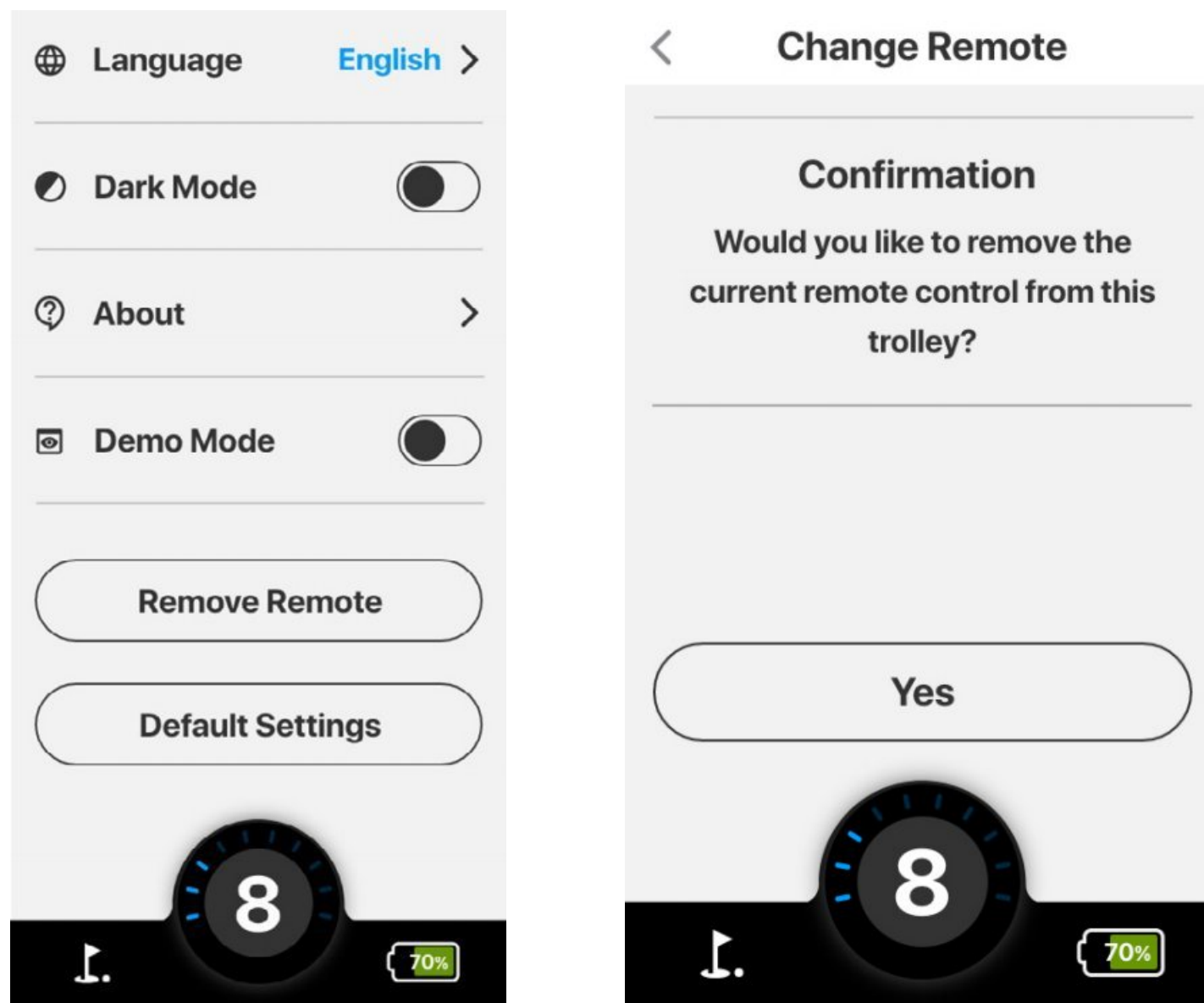
- Demo Mode can be activated from Settings from the Home Screen. Scroll down and tap the toggle to switch Demo Mode on/off.



## 6.10 REMOVING PAIRED REMOTE:

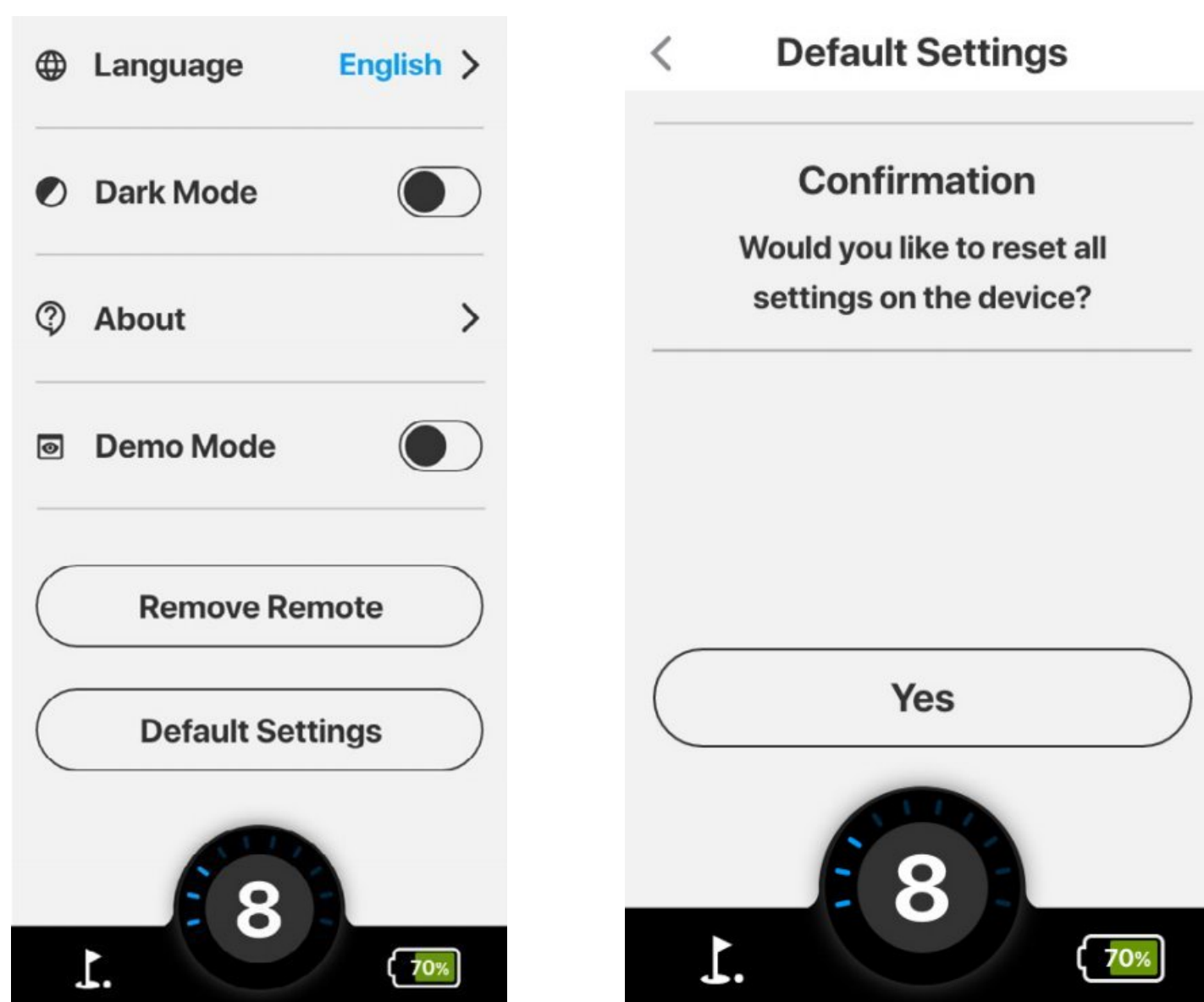
- To remove the currently paired remote from the Ai Navigator GPS<sup>+</sup>, go to Settings from the Home Screen and scroll down to Remove Remote and tap that option.

- From there, you will have to tap yes to confirm unpairing and removal of remote from the Ai Navigator GPS<sup>+</sup>.



## 6.11 REVERTING TO DEFAULT SETTINGS

- To revert all settings to default, go to Settings from the Home Screen scroll down and tap the toggle.
- Tap yes to confirm resetting all your settings and preferences on the Ai Navigator GPS<sup>+</sup> back to default.



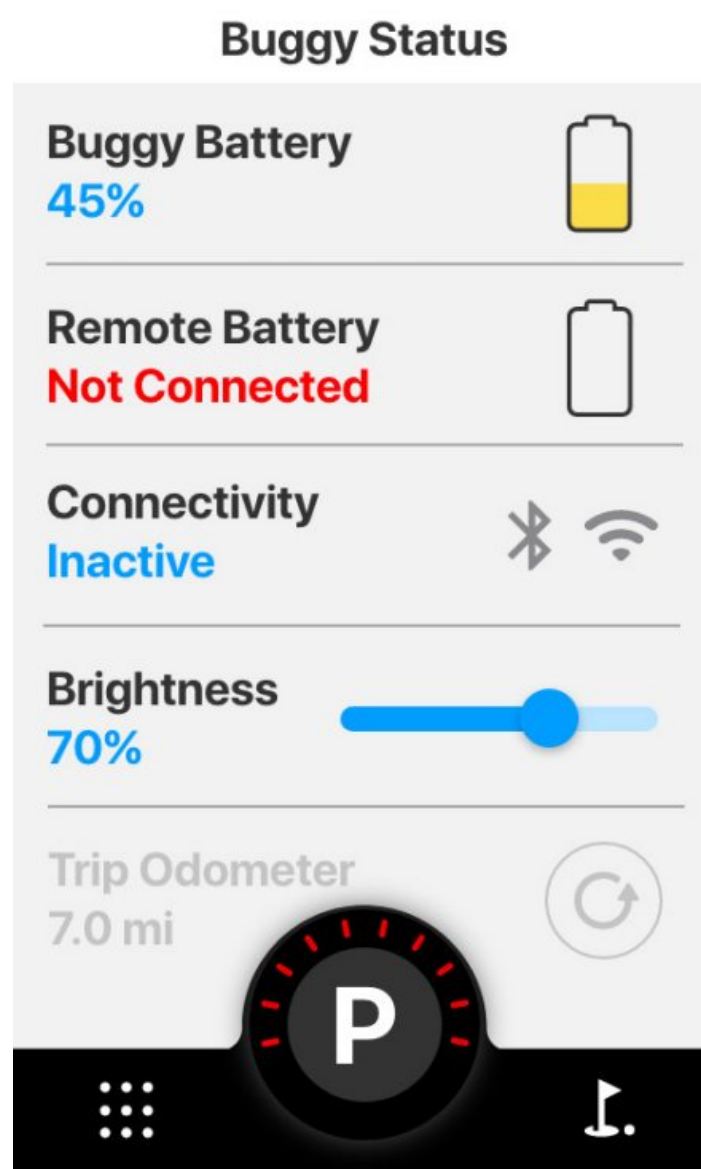
## 7.0 Ai NAVIGATOR GPS<sup>+</sup> STATUS

### 7.1 VIEWING BATTERY STATUS

- To view your battery status, from the home screen tap the battery icon located in the bottom right hand corner.
- This screen includes information about the Ai Navigator GPS<sup>+</sup> battery capacity, remote control connection status and remote-control battery capacity.

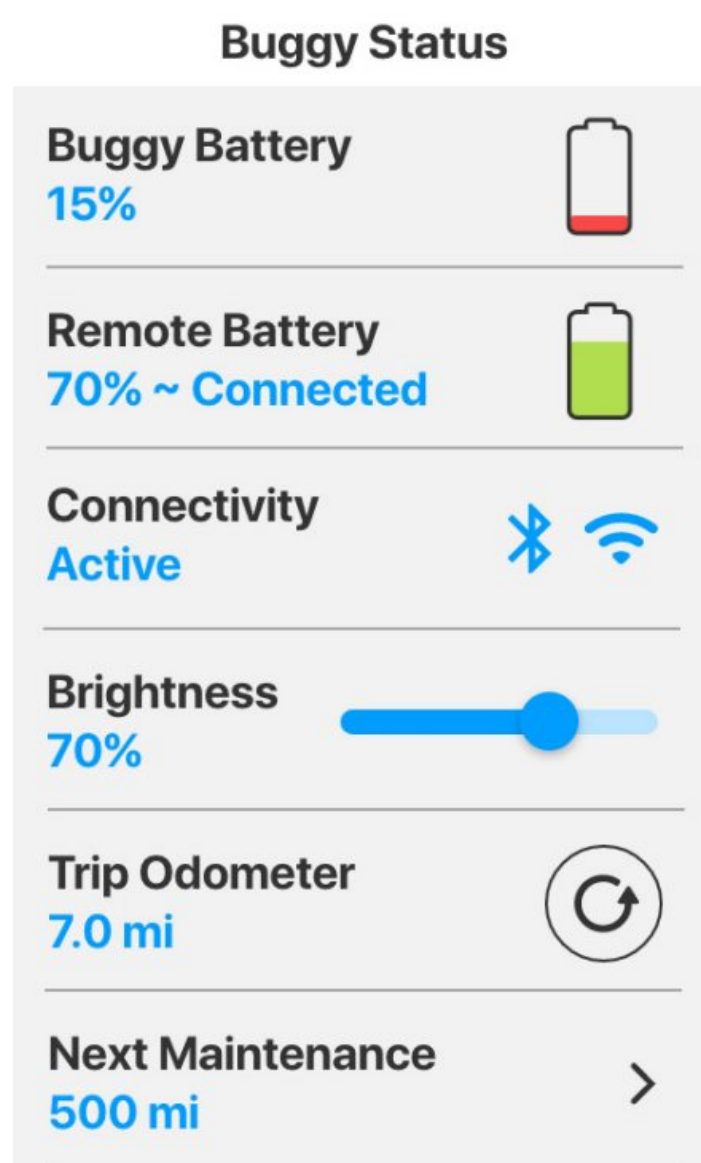


- Ensure your remote is turned on to check remote control connection status and capacity.



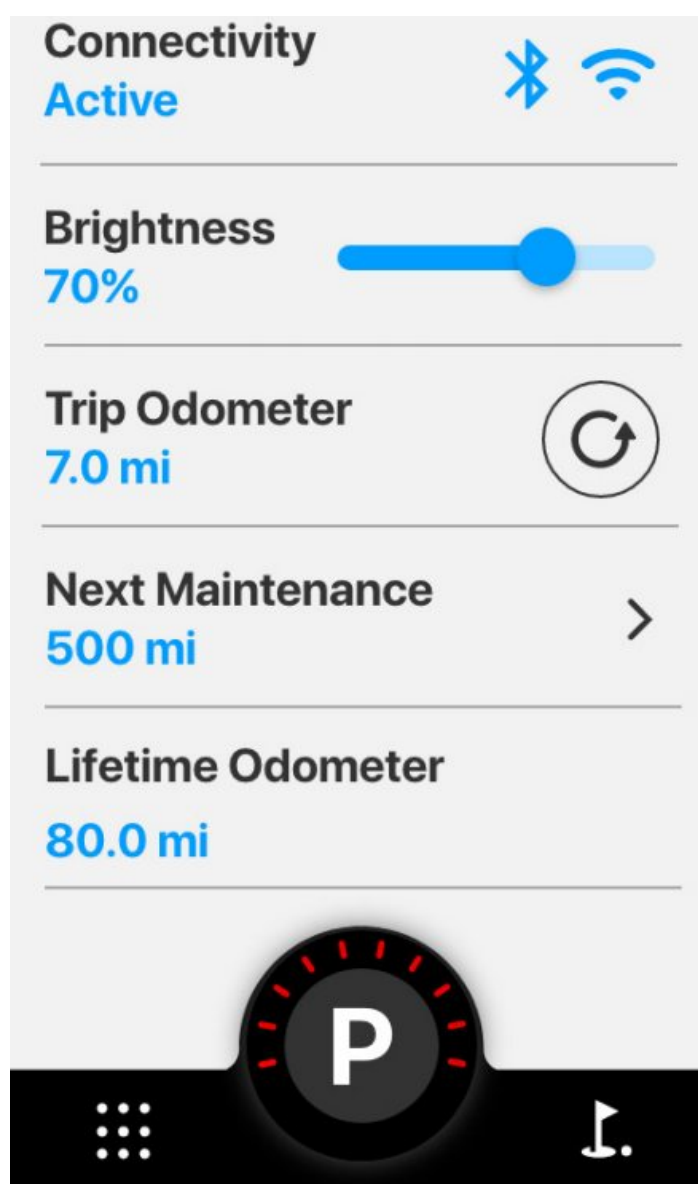
## 7.2 ADJUSTING SCREEN BRIGHTNESS:

- To adjust screen brightness, tap the BATTERY icon located in the bottom right of the Home Screen and use the slider to brighten or dim the screen as needed.



## 7.3 VIEW ODOMETER & NEXT MAINTENANCE:

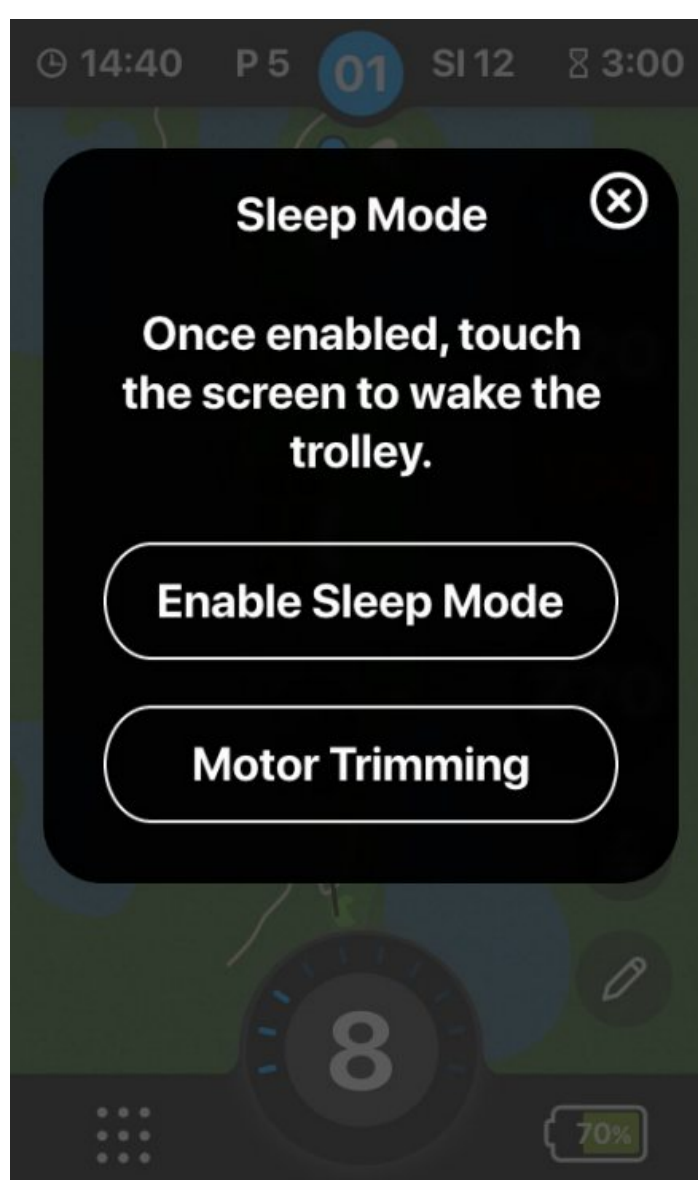
- To view Ai Navigator GPS<sup>+</sup> lifetime and trip odometer tap the BATTERY icon located in the bottom right of the Home Screen then scroll down to view this information.
- You can update your trip odometer by tapping the REFRESH icon to the right of the Trip Odometer.
- To see when the next maintenance is due tap the BATTERY icon from the Home Screen then scroll down to Next Maintenance and tap to view.



## 8.0 MISCELLANEOUS

### 8.1 SLEEP MODE

- To enter Sleep Mode on the Ai Navigator GPS<sup>+</sup>, hold the Speed Dial button down for 3 seconds. The option to enter Sleep Mode will pop up.
- Sleep mode can be activated from any screen and will turn your screen black. Please note that during Sleep Mode, the Ai Navigator GPS<sup>+</sup> will draw current from the main battery.
- To exit Dark Mode, tap anywhere on the screen.

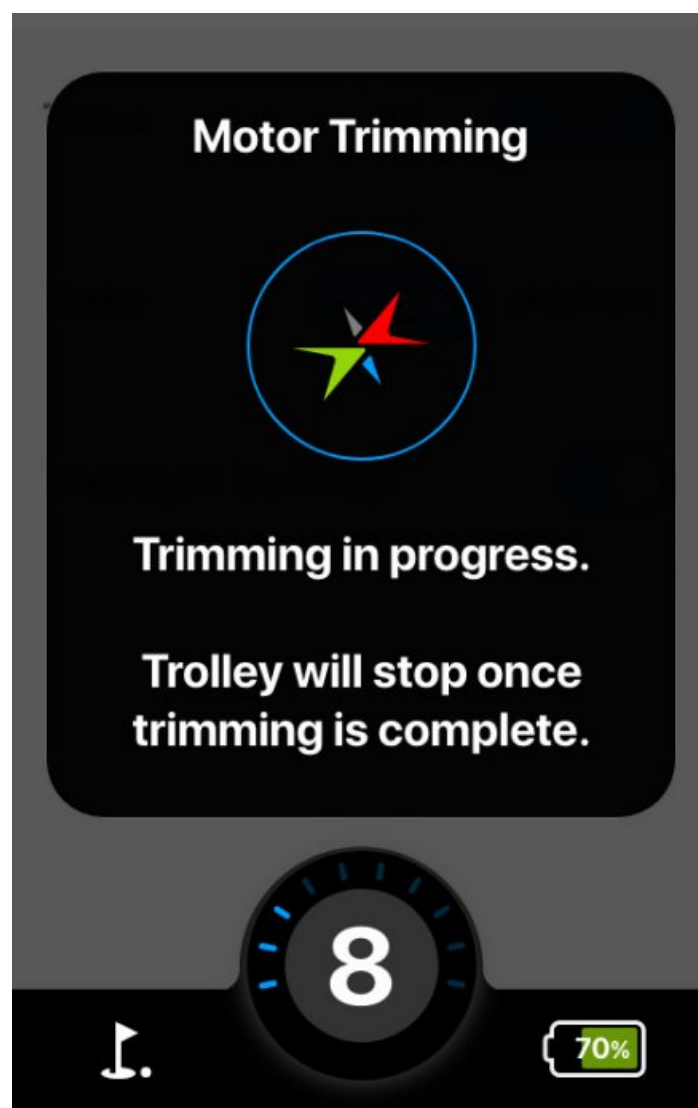


### 8.2 HOW TO TRIM THE MOTORS

- To Trim motors on the Ai Navigator GPS<sup>+</sup>, hold the Speed Dial button down for 3 seconds. The option to enter Motor Trimming mode will pop up.
- The Ai Navigator GPS<sup>+</sup> will give you the option to start motor trimming, and it will prompt that the Ai Navigator GPS<sup>+</sup> will need 20 meters of level ground to complete the trimming process.



- During trimming it will let you know the trimming is in progress and it will stop and return to the screen you were previously on, once completed.



## 9.0 FAQ

**Q: On the Ai Navigator GPS<sup>+</sup> there is a menu option called Rounds. How and what does this synchronise with?**

A: Rounds scored on the GPS<sup>+</sup> will be available here. If you connect to Wi-Fi the rounds can also sync with the system (to be shown in the app for example)

**Q: Where do you input your fairways and green shots? I cannot find this anywhere in the scoring screens on either the GPS<sup>+</sup> or App.**

A: Greens in Regulation are calculated automatically based on score/putts entered.

Fairways are only available on Par 4+ holes, therefore not available on a Par 3.

Please refer to **mgigolf.com** for more information.





**mgigolf.com**

**MGI AUSTRALIA**

**Service Email:** customerservice@mgigolf.com

**Live Chat:** visit mgigolf.com

**Toll Free within Australia:** 1300 644 523 (excludes mobiles)

Western Australia/ Internal phone +61 3 8872 6700

**Local Service Centres:** visit mgigolf.com  
to locate you local service centre.

**MGI USA**

**Service Email:** serviceusa@mgigolf.com

**Live Chat:** visit us.mgigolf.com

**Telephone:** 1800 617 2990

**MGI CANADA**

**Service Email:** servicecanada@mgigolf.com

**Live Chat:** visit us.mgigolf.com

**Telephone:** 1800 617 2990

**MGI GLOBAL**

**Sales Email:** globalsales@mgigolf.com

**Service Email:** globalservice@mgigolf.com

**Live Chat:** visit mgigolf.com

Follow us on



*NOTE: This user manual was correct at time of printing. The online version is the most up-to-date and must be referred to as the correct version. To download the most current user manual please visit mgigolf.com. Images shown throughout this manual may not be of the particular model you have purchased. MGIG\_2037 04/23.*